

ANDREA AND TREVOR DOW'S VERY USEFUL PIANO LIBRARY

# COACH WEBBER'S KEEPER SEEKER

SONGBOOK, V.U. LEVEL E



SUPPLEMENTARY SONGS AND ACTIVITIES  
**FOR MID-PRIMER PIANO STUDENTS**

This is a preview (17 of 32 pages).  
Pages have been removed from  
various sections.

# COACH WEBBER'S KEEPER SEEKER

SONGBOOK, V. U. LEVEL E



SUPPLEMENTARY SONGS AND ACTIVITIES  
FOR MID-PRIMER PIANO STUDENTS

*Andrea and Trevor Dow's*  
VERY USEFUL PIANO LIBRARY

Coach Webber's Keeper Seeker Songbook by Andrea and Trevor Dow  
Copyright © 2026 Teach Music Today Learning Solutions and WunderKeys Music  
[www.teachpianotoday.com](http://www.teachpianotoday.com) and [www.wunderkeys.com](http://www.wunderkeys.com)

All Rights Reserved. This book or parts thereof may not be reproduced in any form, stored in any retrieval system, or transmitted in any form by any means -electronic, mechanical, photocopy, recording, or otherwise - without prior written permission of the publisher, except as provided by copyright law.



# COACH W

Sample

5

...ie try - outs for my soc - cer team.

4

5

Need to find the per - fect goal - ie for An - i - mal F C.

9

*mp* Some-one who can stop the ball. Some-one quick to dive and fall.

This musical system contains four measures. The vocal line (treble clef) has notes corresponding to the lyrics: 'Some-one who can stop the ball. Some-one quick to dive and fall.' The piano accompaniment (bass clef) consists of a steady eighth-note bass line.

13

*mf* Some-one who can catch and kick and help us win

This musical system contains four measures. The vocal line (treble clef) has notes corresponding to the lyrics: 'Some-one who can catch and kick and help us win'. The piano accompaniment (bass clef) continues with the eighth-note bass line.

17

...the goal - ie that I put in net?

This musical system contains four measures. The vocal line (treble clef) has notes corresponding to the lyrics: '...the goal - ie that I put in net?'. The piano accompaniment (bass clef) continues with the eighth-note bass line.

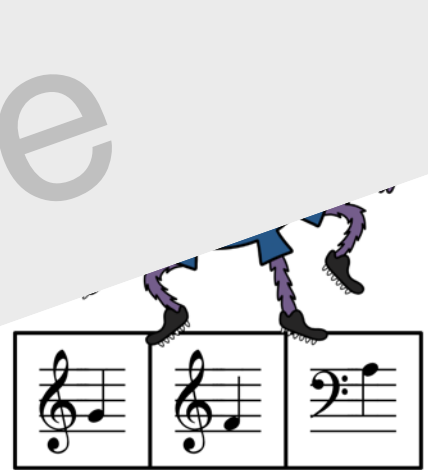
21

Step right up, let's see your skills. An M V P is here, I bet!

This musical system contains four measures. The vocal line (treble clef) has notes corresponding to the lyrics: 'Step right up, let's see your skills. An M V P is here, I bet!'. The piano accompaniment (bass clef) continues with the eighth-note bass line.

# NOTE READING

Draw an X over the note beneath each spider that matches the note name on its shirt.



Sample



Write the note names in the boxes. Record your time.

# TIMED TEST

Row 1: Five musical staves. The first is bass clef with a note on the second line. The second is bass clef with a note on the second line. The third is treble clef with a note on the second line. The fourth is bass clef with a note on the second line. The fifth is treble clef with a note on the second line.

Row 2: Five musical staves. The first is treble clef with a note on the second line. The second is bass clef with a note on the second line. The third is bass clef with a note on the second line. The fourth is bass clef with a note on the second line. The fifth is treble clef with a note on the second line.

Row 3: Five musical staves. The first is treble clef with a note on the second line. The second is treble clef with a note on the second line. The third is treble clef with a note on the second line. The fourth is treble clef with a note on the second line. The fifth is treble clef with a note on the second line.

Sample

Row 4: Five musical staves. The first is treble clef with a note on the second line. The second is bass clef with a note on the second line. The third is treble clef with a note on the second line. The fourth is bass clef with a note on the second line. The fifth is bass clef with a note on the second line.

Row 5: Five musical staves. The first is bass clef with a note on the second line. The second is treble clef with a note on the second line. The third is treble clef with a note on the second line. The fourth is treble clef with a note on the second line. The fifth is bass clef with a note on the second line.

Row 6: Five musical staves. The first is bass clef with a note on the second line. The second is treble clef with a note on the second line. The third is bass clef with a note on the second line. The fourth is treble clef with a note on the second line. The fifth is a rectangular box for recording time.

Time:



**KEEP on SWIMMING**

Sample

...a Dow

... - ting in - side the net?

 A musical staff with a treble clef. The melody consists of four quarter notes: G4, A4, B4, and C5. The lyrics are aligned with the notes: "... - ting" under G4, "in - side the" under A4, and "net?" under B4 and C5. A whole rest is placed above the staff for the final measure.

5  
This could be the od - dest try - out I have seen yet.

 A musical staff with a treble clef, starting with a measure rest labeled '5'. The melody consists of four quarter notes: G4, A4, B4, and C5. The lyrics are aligned with the notes: "This could be the" under G4, "od - dest try - out" under A4, "I have seen" under B4, and "yet." under C5. A whole rest is placed above the staff for the final measure.

9

*mf* We need a goal - ie who won't take a nap.

Musical notation for measures 9-12, including a treble clef, a grand staff, and lyrics.

13

Lay - ing down in the net sure leaves a risk

Musical notation for measures 13-16, including a treble clef, a grand staff, and lyrics.

17

as we play right 'til spring.

Musical notation for measures 17-20, including a treble clef, a grand staff, and lyrics.

21

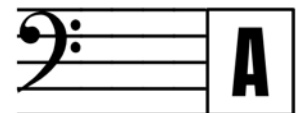
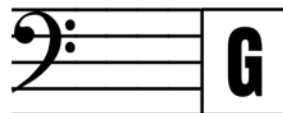
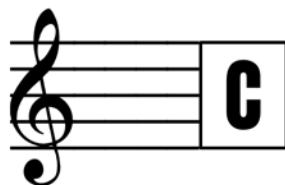
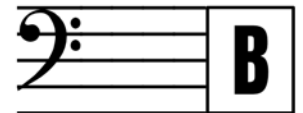
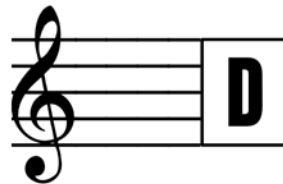
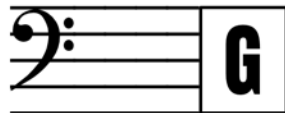
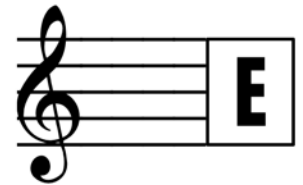
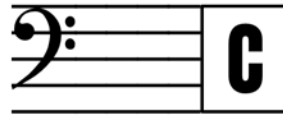
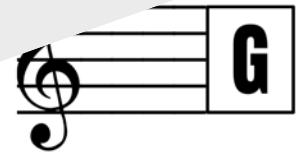
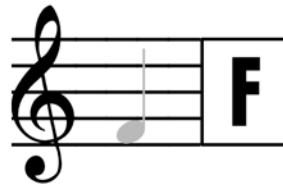
*f* Go a - head, Bear, keep on snooz - ing. Soc - cer's not your thing.

Musical notation for measures 21-24, including a treble clef, a grand staff, and lyrics.



On each staff, draw a note that matches the note name.

# NOTE PRINTING



Sample

# NOTE READING

Beginning at the rhino and ending at the soccer ball, draw a line that passes through seven note circles. In Box 1, write the name of each note in each circle that rests on your path. Next, draw a new path and write the note names in Box 2. Finally, play again.



<b>1</b>	
----------	--

<b>2</b>	
----------	--

<b>3</b>	
----------	--



# TAKE

Sample

...a Dow

try to block this shot.

Musical notation for the first line of the song. It consists of a single staff with a treble clef. The melody is: G4 (quarter), A4 (quarter), B4 (quarter), C5 (half). The lyrics "try to block this shot." are written below the notes.

5

I have hope for what you'll do with those long arms you've got!

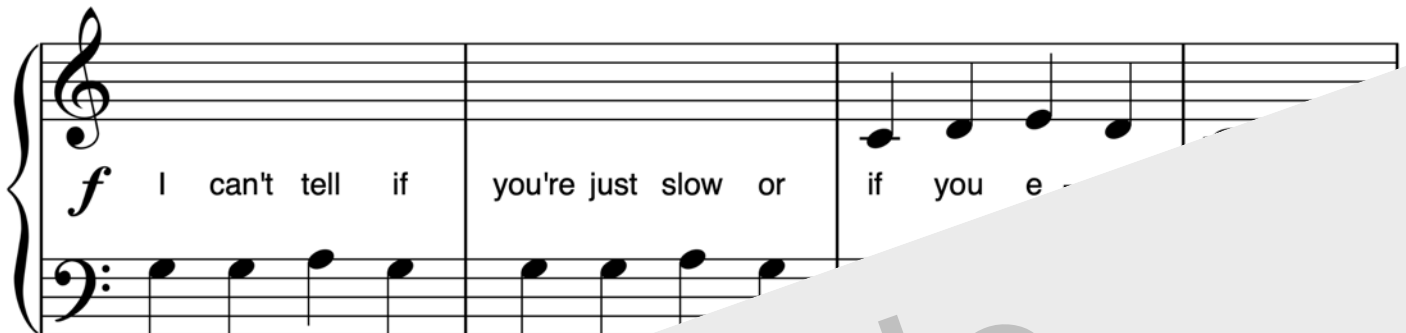
Musical notation for the second line of the song. It consists of two staves: a treble clef staff and a bass clef staff. The treble staff melody is: G4 (quarter), A4 (quarter), B4 (quarter), C5 (half). The bass staff accompaniment is: G3 (quarter), A3 (quarter), B3 (quarter), C4 (quarter). The lyrics "I have hope for what you'll do with those long arms you've got!" are written between the staves.

9



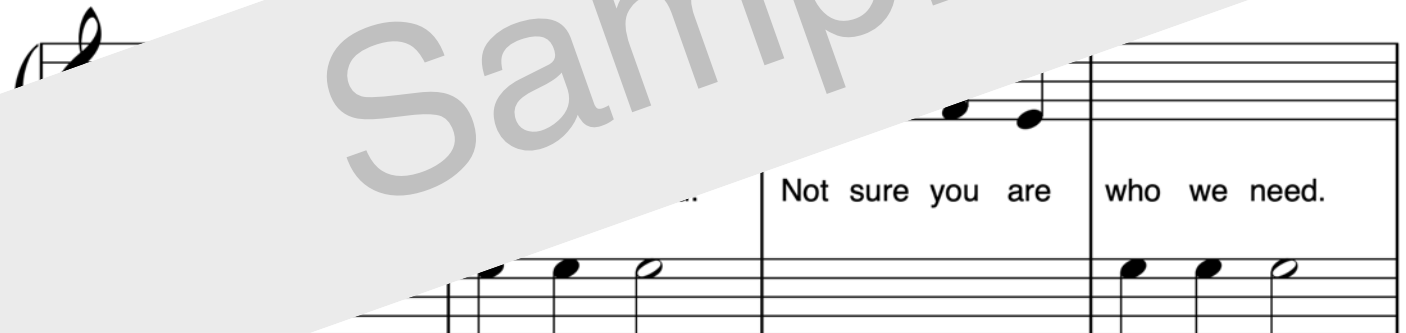
*p* Did you e - ven spy the ball whiz - zing by?

13



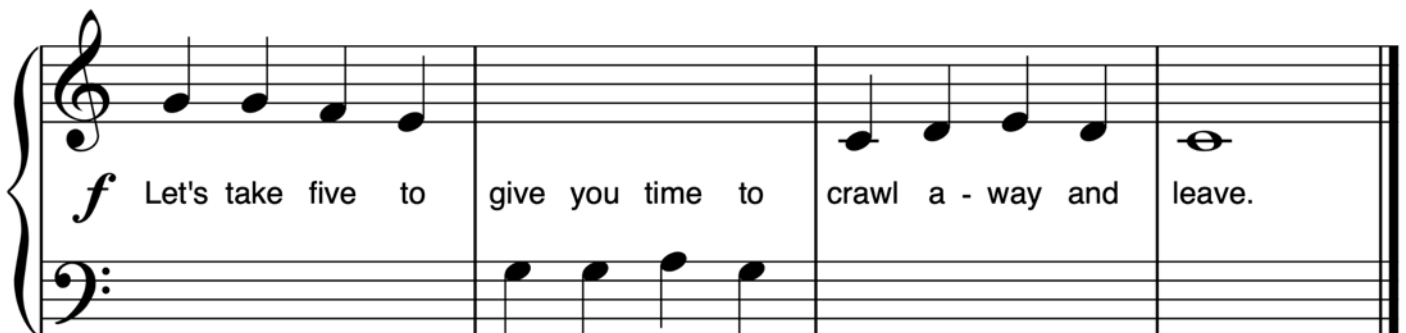
*f* I can't tell if you're just slow or if you e

17



Not sure you are who we need.

21



*f* Let's take five to give you time to crawl a - way and leave.



# RHYTHM DRUM DRILLS

Sit at a table with a pencil in each hand. Select a line of rhythm. If a measure is PURPLE, tap its rhythm with the pencil in your right hand. If a measure is GREEN, tap its rhythm with pencil in your left hand. If a measure is BLACK, tap its rhythm with both pencils.

## ONE

4/4 ♪ ♪ ♪

♪ ♪ ♪ ♪

♪ ♪

♪ ♪ ♪ ♪

♪ ♪

♪ ♪

## THREE

4/4 ♪ ♪

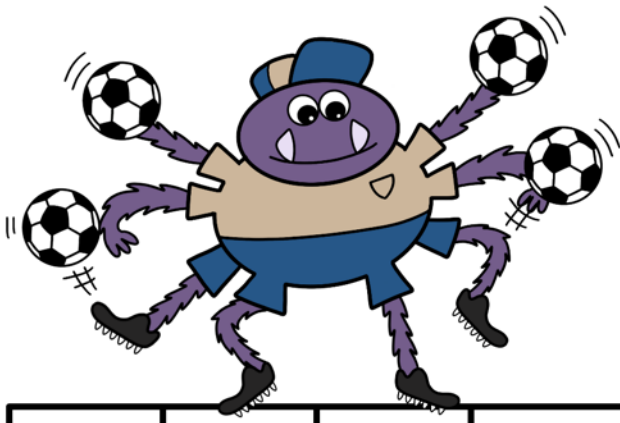
♪ ♪ ♪

♪ ♪

♪

Sample

# MYSTERY PICTURE



Color each square using the Crayon Guide. For example, if the note inside a square is F on the bass staff, color that square dark blue.


Sample

<p>Bass Staff</p> <p><b>F</b> DARK BLUE</p>	<p>Bass Staff</p> <p><b>G</b> LIGHT BLUE</p>	
<p>Bass Staff</p> <p><b>A</b> BEIGE</p>	<p>Bass Staff</p> <p><b>B</b> PURPLE</p>	<p>Bass Staff</p> <p><b>C</b> GREEN</p>

# THE WORLD CUP

## Teacher Part

Musical score for the 'Teacher Part' of 'The World Cup'. The score is written in 4/4 time and consists of 13 measures. It is divided into four systems, each with a measure number (1, 5, 9, 13) at the beginning. The upper staff is a grand staff with a treble clef, and the lower staff is a grand staff with a bass clef. The first system (measures 1-4) includes a dynamic marking of *f* in the bass staff. The second system (measures 5-8) continues the piece. The third system (measures 9-12) also continues. The fourth system (measures 13) concludes the piece with a final double bar line. Fingerings are indicated by numbers 1, 2, and 5 above notes in the treble staff. A large, semi-transparent watermark reading 'Sample' is overlaid diagonally across the middle of the page.

# THE WORLD CUP

Student Part: Play one octave higher than written.

3

*f* 1. With me in the net, they won't score a goal, I bet.  
2. With my web in place, I have cov - ered ev - 'ry space.

Musical notation for measures 3 and 4 in 4/4 time. The treble clef staff contains the melody, and the bass clef staff is empty. The melody consists of quarter notes: G4, A4, B4, C5, D5, E5, F5, G5.

5

With this stra - te - gy, we'll claim vic - tory  
We will own the field, re - write the book

Musical notation for measures 5 and 6 in 4/4 time. The treble clef staff contains the melody, and the bass clef staff is empty. The melody consists of quarter notes: G4, A4, B4, C5, D5, E5, F5, G5.

9

kick it low or head it high.

Musical notation for measures 9 and 10 in 4/4 time. The treble clef staff contains the melody, and the bass clef staff is empty. The melody consists of quarter notes: G4, A4, B4, C5, D5, E5, F5, G5.

13

*f* Our club has just lev - eled up... we'll win the World Cup!

Musical notation for measures 13, 14, 15, and 16 in 4/4 time. The treble clef staff contains the melody, and the bass clef staff contains a bass line. The melody consists of quarter notes: G4, A4, B4, C5, D5, E5, F5, G5. The bass line consists of quarter notes: G2, A2, B2, C3, D3, E3, F3, G3.



Draw an X over  
one soccer ball each day  
you practice with this book.

## PRACTICE TRACKER



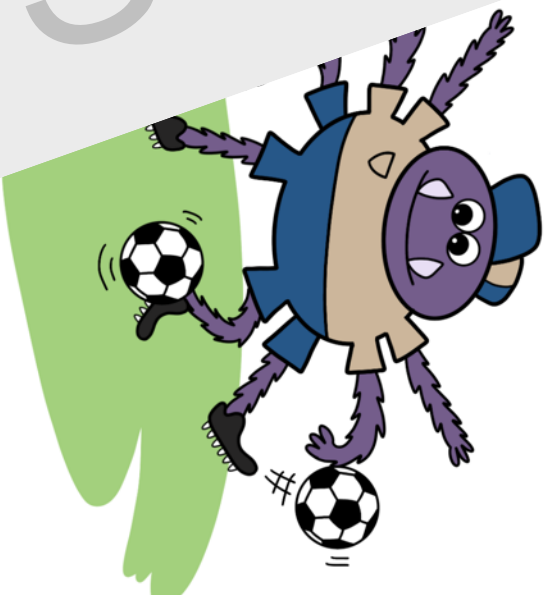


**CERTIFICA**

**EVENTMENT**

Presented to:

\_\_\_\_\_



**YOUR PLANO SKILLS ARE**

**PERFECT**

Sample

Thank you for previewing

**Coach Webber's  
Keeper Seeker Songbook,  
V. U. Level E**

[Click here to purchase this book.](#)