



This Pop Staff piece makes Auld Lang Syne quick, enjoyable, and completely accessible.

HOLIDAY POP STAFF PIANO

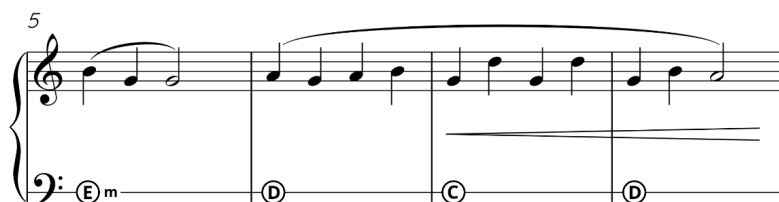
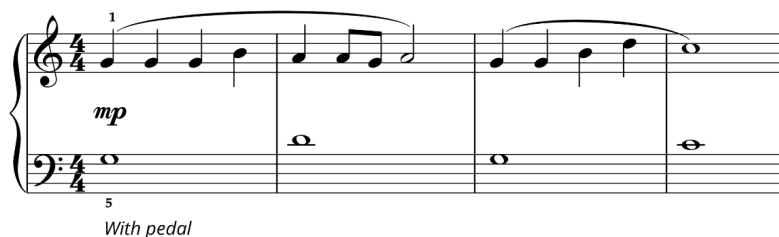


Auld Lang

For Auld'er Beginners

Begin with your hands in G position. Chord symbols indicated on the Pop Staff can be played as held fifths or more complicated left-hand patterns.

Andrea Dow | Arr. Auld Lang Syne

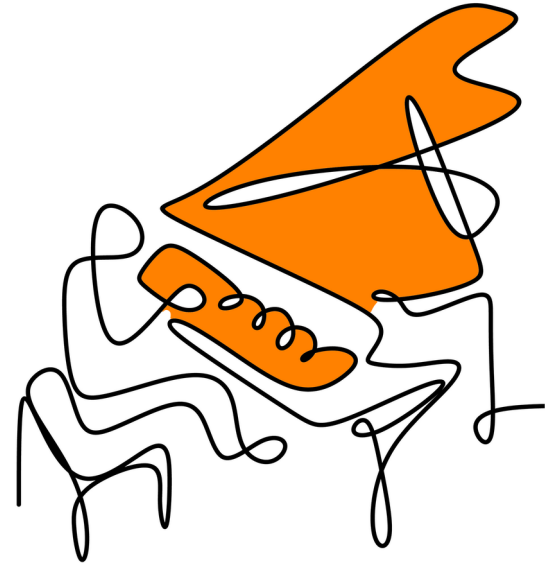


Today's Pop Staff piano piece is for Older Beginners working in Book 3. If you are teaching newer teens and adults check out the Pop Staff Method Books on the following pages...

OLDER BEGINNER

With its unique approach to older beginner piano education, *WunderKeys Pop Staff Piano Library For Older Beginners, Book One* is a game-changer.

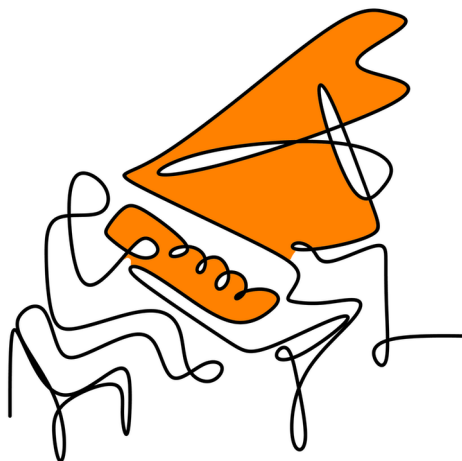
Our innovative Pop Staff enables students to play significantly more rewarding music than repertoire found in traditional older beginner books, while still learning everything (including bass staff note reading) that those methods teach.



CLASSICAL POP REPERTOIRE AND SUPPLEMENTARY ACTIVITIES

WUNDERKEYS POP STAFF PIANO

LIBRARY FOR OLDER BEGINNERS



BOOK ONE

AVAILABLE ON AMAZON

BUY NOW

The Pop Staff

PIANO LIBRARY

OLDER BEGINNER 2

WunderKeys Pop Staff Piano Library For Older Beginners, Book Two continues the awesome journey on the Pop Staff that began in Book One.

In addition to everything learned in Book One, students will also explore hands-together held notes, hands-together matching notes, hands-together non-matching notes, repeating eighth notes, stepping eighth notes, skipping eighth notes, and notes in the treble C 5-finger scale.



CLASSICAL POP REPERTOIRE AND SUPPLEMENTARY ACTIVITIES

WUNDERKEYS POP STAFF PIANO

LIBRARY FOR OLDER BEGINNERS



BOOK TWO

AVAILABLE ON AMAZON

BUY NOW

The Pop Staff
PIANO LIBRARY



Auld Lang

For Auld'er Beginners

Begin with your hands in G position. Chord symbols indicated on the Pop Staff can be played as held fifths or more complicated left-hand patterns.

Andrea Dow | Arr. Auld Lang Syne

Musical notation for the first system of 'Auld Lang'. It consists of a grand staff with a treble clef and a bass clef, both in 4/4 time. The treble staff has a melodic line starting on G4, with a slur over the first four notes and a '1' above the first note. The bass staff has a single note G2 in the first measure, followed by rests. The dynamic marking 'mp' is placed in the first measure.

5
With pedal

Musical notation for the second system of 'Auld Lang'. It consists of a grand staff with a treble clef and a bass clef, both in 4/4 time. The treble staff has a melodic line starting on G4, with a slur over the first four notes. The bass staff has chord symbols: E m, D, C, and D. The number '5' is written above the first measure.

9

f

① G ② D ③ G ④ C

Detailed description: This system contains measures 9 through 12. The treble clef staff features a melodic line starting on G4, moving up stepwise to B4, then down to A4, G4, and finally a half note G4. The bass clef staff provides harmonic support with four chords: G major (measure 9), D major (measure 10), G major (measure 11), and C major (measure 12). The dynamic marking *f* is placed in the first measure.

13

mp

① E^m ② D ③ C ④ D

Detailed description: This system contains measures 13 through 16. The treble clef staff continues the melodic line from measure 12, moving up to A4, B4, C5, and then down to B4, A4, G4, and F4. The bass clef staff has four chords: E minor (measure 13), D major (measure 14), C major (measure 15), and D major (measure 16). The dynamic marking *mp* is placed in the first measure.

17

f

① G ② E^m ③ D ④ G

Detailed description: This system contains measures 17 through 20. The treble clef staff continues the melodic line, moving up to G4, A4, B4, C5, and then down to B4, A4, G4, and F4. The bass clef staff has four chords: G major (measure 17), E minor (measure 18), D major (measure 19), and G major (measure 20). The dynamic marking *f* is placed in the first measure.

21

p

① G ② D ③ C ④ G

Detailed description: This system contains measures 21 through 24. The treble clef staff continues the melodic line, moving up to G4, A4, B4, C5, and then down to B4, A4, G4, and F4. The bass clef staff has four chords: G major (measure 21), D major (measure 22), C major (measure 23), and G major (measure 24). The dynamic marking *p* is placed in the first measure.