

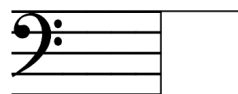
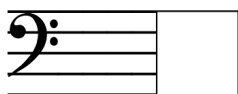
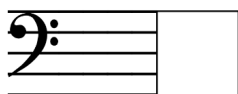
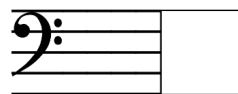
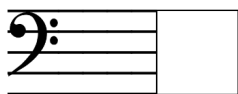
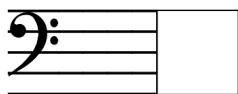
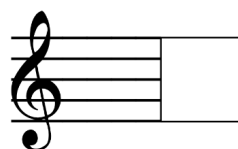
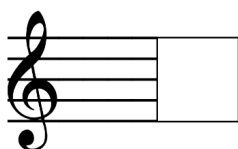
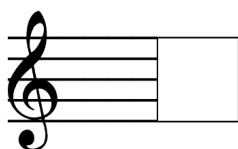
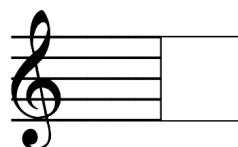
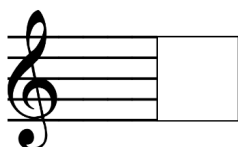
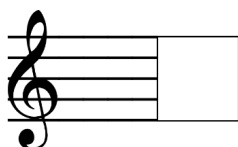
These flexible resources—including customizable note reading sheets, blank staff paper, and Tic Tac Toe note reading—make it simple to create personalized exercises tailored to each student.

## CUSTOMIZABLE EXERCISE PAGES

### DIY NOTE READING

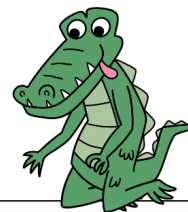
**Teacher Instructions:** Draw notes on the blank music staves to reinforce specific note sets with your piano students.

**Student Instructions:** In the boxes, write the note names for the note images.



**PER**

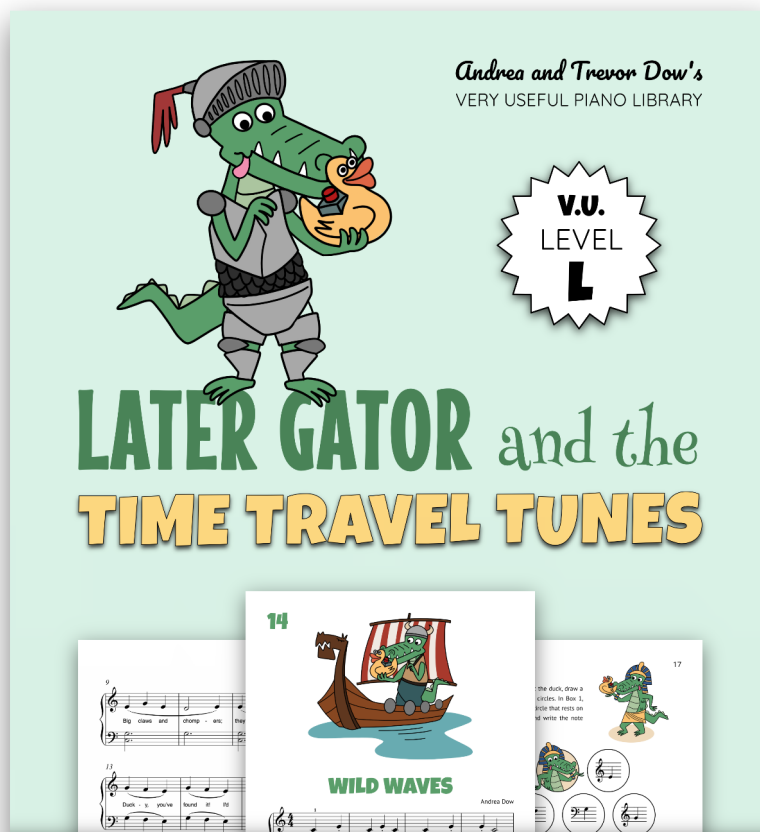
actice note



# LEVEL 1 MUSIC

**Later Gator and the Time Travel Tunes** is the perfect resource for students who have completed a primer method book series and are ready to move into a Level 1 book.

This exciting resource includes piano songs, note-reading games, warm-up exercises, sight-reading practice, articulation activities, a practice tracker, and a certificate of achievement.



AVAILABLE ON AMAZON



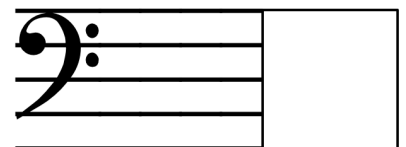
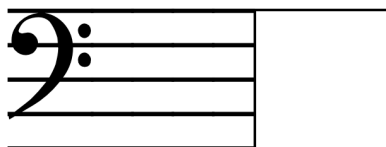
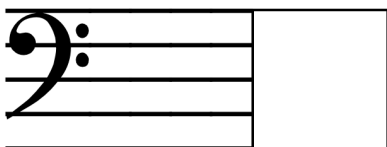
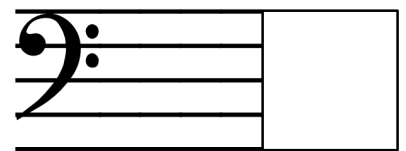
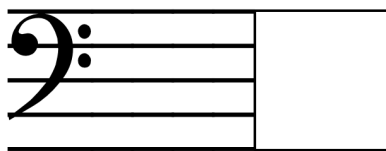
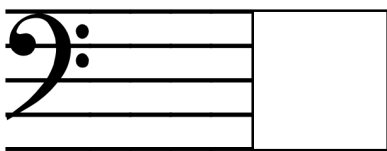
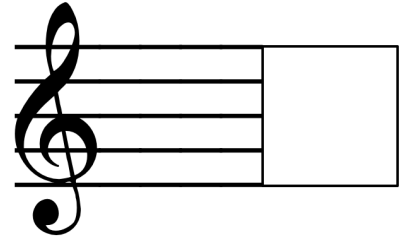
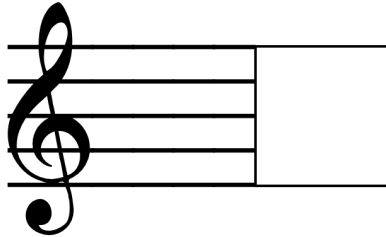
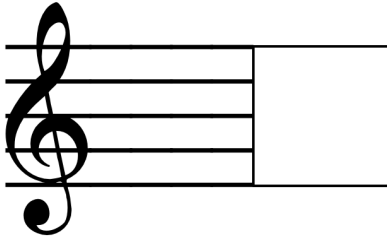
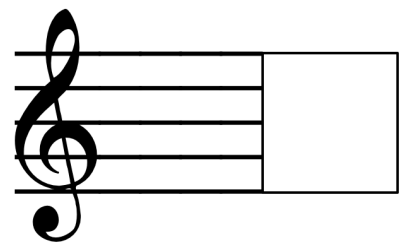
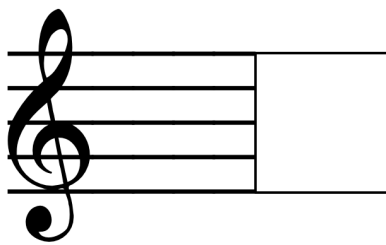
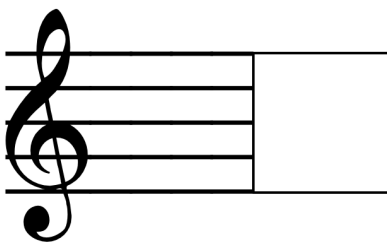
*Andrea and Trevor Dow's*  
VERY USEFUL PIANO LIBRARY

SUPPLEMENTARY SONGS AND ACTIVITIES FOR  
**EARLY LEVEL 1 PIANO STUDENTS**

# DIY NOTE READING

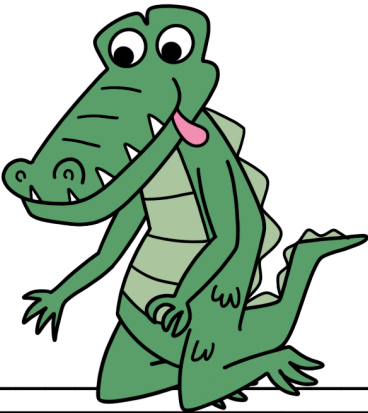
**Teacher Instructions:** Draw notes on the blank music staves to reinforce specific note sets with your piano students.

**Student Instructions:** In the boxes, write the note names for the note images.



# BLANK STAFF PAPER

Use the **Staff Paper** to compose a piano piece, practice note printing, create technical exercises, and more...



Musical staff with a treble clef on the top line and a bass clef on the bottom line. A large curly brace on the left side groups both staves.

Musical staff with a treble clef on the top line and a bass clef on the bottom line. A large curly brace on the left side groups both staves.

Musical staff with a treble clef on the top line and a bass clef on the bottom line. A large curly brace on the left side groups both staves.

Musical staff with a treble clef on the top line and a bass clef on the bottom line. A large curly brace on the left side groups both staves.

# TIC TAC TOE

**Teacher Instructions:** In the blank spaces above each game board, write the names of two notes that require extra practice. When playing Tic Tac Toe, use the corresponding note images instead of Xs and Os.



**Game 1 - \_\_\_\_\_ and \_\_\_\_\_**


**Game 2 - \_\_\_\_\_ and \_\_\_\_\_**


**Game 3 - \_\_\_\_\_ and \_\_\_\_\_**


**Game 4 - \_\_\_\_\_ and \_\_\_\_\_**
