

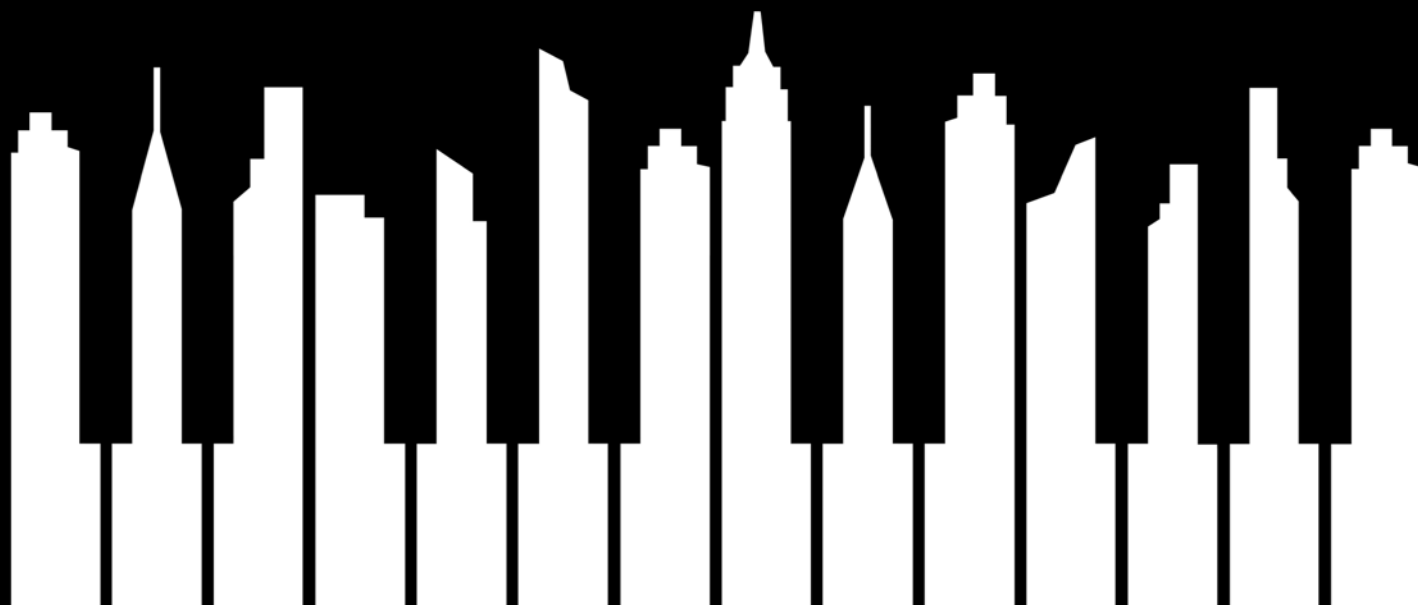
WUNDERKEYS

ROCK,



TUCK & ROLL

by Andrea and Trevor Dow



ONE OCTAVE SCALE SOLOS IN C MAJOR AND A MINOR

This is a preview (20 of 39 pages).
Pages have been removed from
various sections.

WUNDERKEYS ROCK, TUCK & ROLL

ONE OCTAVE SCALE SOLOS IN C MAJOR AND A MINOR



WunderKeys Rock, Tuck & Roll - One Octave Scale Solos in C Major and A Minor
by Andrea and Trevor Dow

Copyright © 2024 Teach Music Today Learning Solutions and WunderKeys Music
www.teachpianotoday.com and www.wunderkeys.com

All Rights Reserved. This book or parts thereof may not be reproduced in any form, stored in any retrieval system, or transmitted in any form by any means - electronic, mechanical, photocopy, recording, or otherwise - without prior written permission of the publisher, except as provided by copyright law.

4

C Major Intro (Scales)

6

C Major Intro (Pop Chords)

8

Waves (C Major)

10

Note Reading (C Major)

12

Rush (C Major)

14

A Minor Intro (Scales)

16

A Minor Intro (Pop Chords)

18

Fallen (A Minor)

20

Note Reading (A Minor)

22

Roam (A Minor)

24

C Major Scale Paths

26

Spark (C Major)

28

Note Reading (C Major)

30

Glow (C Major)

32

A Minor Scale Paths

34

Ember (A Minor)

36

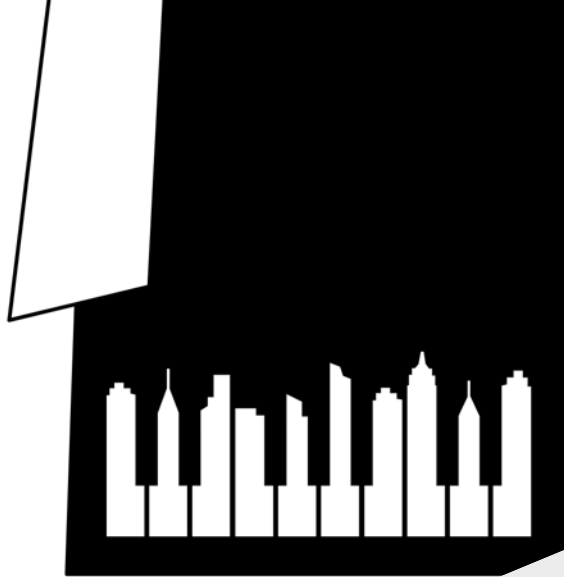
Note Reading (A Minor)

38

Blaze (A Minor)



C MAJOR INTRO



Let's get your fingers ready to rock! At the beginning of your practice session, perform the following five exercises.

SCALE EXERCISE 1

Musical notation for Scale Exercise 1. It consists of a single staff with a treble clef and a 4/4 time signature. The melody starts on middle C and moves up stepwise to G4, then down stepwise to C4. A large, semi-transparent 'SAMPLE' watermark is overlaid diagonally across the page, partially obscuring the notation.

EXERCISE 2

Musical notation for Exercise 2. It consists of two staves, treble and bass clef, in 4/4 time. The bass clef staff contains a descending scale from G4 to C4 with fingering 1, 3, 1, 5, 1, 3, 1. The treble clef staff contains an ascending scale from C4 to G4 with fingering 5, 1, 3, 1, 3, 1, 5. A large, semi-transparent 'SAMPLE' watermark is overlaid diagonally across the page, partially obscuring the notation.

SCALE EXERCISE 3

Musical notation for Scale Exercise 3 in 4/4 time. The exercise consists of four measures. The first and third measures feature a bass line with a descending eighth-note scale (G4-F4-E4-D4-C4-B3-A3-G3) and a treble line with a whole rest. The second and fourth measures feature a treble line with an ascending eighth-note scale (G4-A4-B4-C5-B4-A4-G4) and a bass line with a whole rest. Fingerings are indicated as 1-3-1-3-1 for the ascending lines and 1-3-1-3-1 for the descending lines.

SCALE EXERCISE 4

Musical notation for Scale Exercise 4 in 4/4 time. The exercise consists of four measures. The first measure has a treble line with a whole note G4 (fingered 5) and a bass line with a whole rest. The second measure has a treble line with a whole rest and a bass line with a descending eighth-note scale (G4-F4-E4-D4-C4-B3-A3-G3) with fingerings 1-3-1-3-1. The third measure has a treble line with a whole note G4 (fingered 5) and a bass line with a whole rest. The fourth measure has a treble line with a whole note G4 (fingered 5) and a bass line with a whole rest.

SAMPLE

EXERCISE 5

Musical notation for Scale Exercise 5 in 6/8 time. The exercise consists of four measures. The first measure has a treble line with an eighth-note scale (G4-A4-B4-C5-B4-A4-G4) with fingerings 1-3-1-5 and a bass line with a whole rest. The second measure has a treble line with a whole note G4 (fingered 5) and a bass line with a whole rest. The third measure has a treble line with a whole rest and a bass line with a descending eighth-note scale (G4-F4-E4-D4-C4-B3-A3-G3) with fingerings 1-3-1-3-1. The fourth measure has a treble line with a whole note G4 (fingered 5) and a bass line with a whole rest.

POP CHORD PRACTICE 1

PLAY WITH PEDAL

Musical notation for Pop Chord Practice 1, featuring a treble and bass clef in 4/4 time. The treble clef contains a melodic line with fingerings 1, 3, 1, 5, 5, 1, 3, 1. The bass clef contains a bass line with fingerings 1, 5. The piece consists of two measures, each ending with a whole note chord.

POP CHORD PRACTICE 2

Musical notation for Pop Chord Practice 2, featuring a treble and bass clef in 4/4 time. The treble clef contains a melodic line with fingerings 5, 1, 3, 1, 5. The bass clef contains a bass line with fingerings 1, 5. The piece consists of two measures, each ending with a whole note chord.

SAMPLE

POP CHORD PRACTICE 3

PLAY WITH PEDAL

Musical notation for Pop Chord Practice 3, featuring a treble and bass clef in 4/4 time. The treble clef contains a melodic line with fingerings 1, 3, 1, 5, 5, 1, 3, 1. The bass clef contains a bass line with fingerings 1, 5. The piece consists of two measures, each ending with a whole note chord.



ANDREA DOW

WAVES



Sweetly

1
5
With pedal

13



C MAJOR



17

21

SAMPLE

29



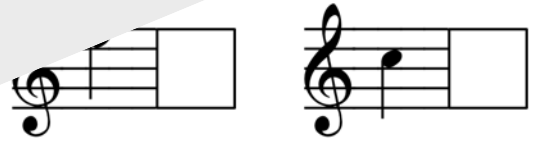
NOTE READING



Write the note
by



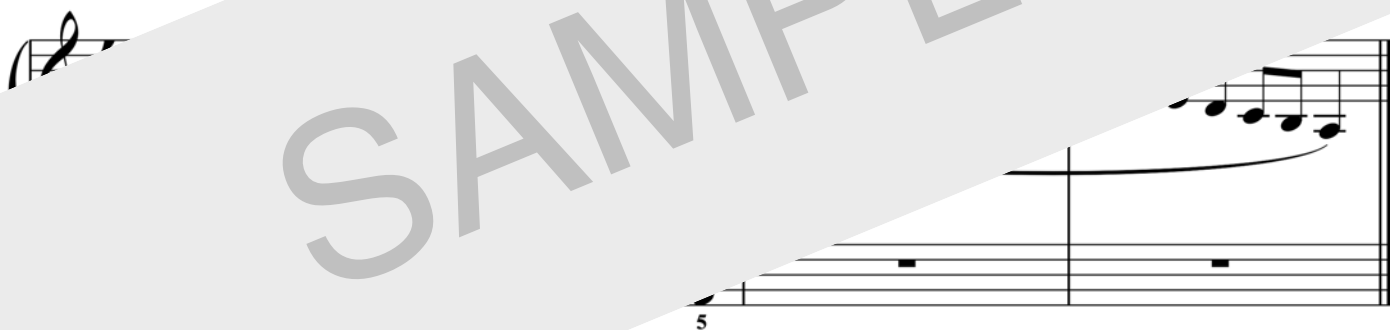
SAMPLE





Let's get your fingers ready to rock! At the beginning of your practice session, perform the following five exercises.

SCALE EXERCISE 1



EXERCISE 2

Musical notation for Exercise 2. It consists of two staves, treble and bass clef, in 4/4 time. The bass staff contains a sequence of notes: a half note G2, a quarter note A2, a quarter note B2, a quarter note C3, a quarter note D3, a quarter note E3, a quarter note F3, and a half note G3. A slur covers the notes from A2 to G3. Finger numbers 1, 3, 1, 5, 1, 3, 1 are written below the notes. The treble staff contains a sequence of notes: a half note G4, a quarter note A4, a quarter note B4, a quarter note C5, a quarter note D5, a quarter note E5, a quarter note F5, and a half note G5. A slur covers the notes from A4 to G5. Finger numbers 5, 1, 3, 1, 3, 1, 5 are written above the notes.

SCALE EXERCISE 3

Musical score for Scale Exercise 3 in 4/4 time. The score consists of four measures. The first and third measures are rests in both staves. The second and fourth measures contain a scale exercise. The right hand (treble clef) plays a descending scale: G4, F4, E4, D4, C4, B2, A2, G2. The left hand (bass clef) plays an ascending scale: G2, A2, B2, C3, D3, E3, F3, G3. Fingering is indicated by numbers 1 and 3 above the notes in the right hand and below the notes in the left hand.

SCALE EXERCISE 4

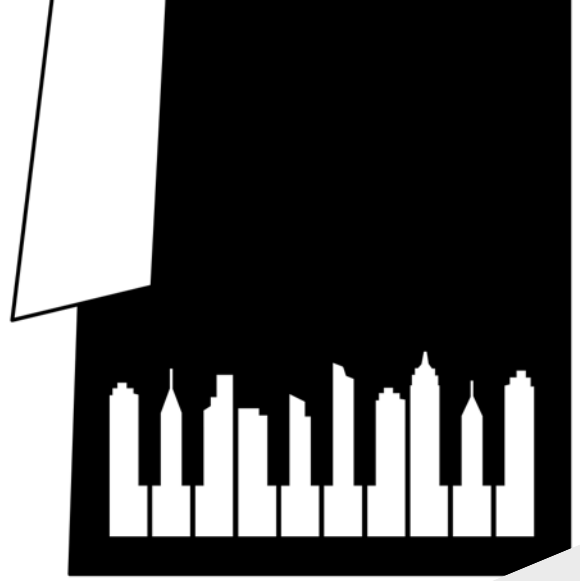
Musical score for Scale Exercise 4 in 4/4 time. The score consists of four measures. The first measure is a rest in both staves. The second measure contains a descending scale in the right hand: G4, F4, E4, D4, C4, B3, A3, G3. The third measure contains an ascending scale in the right hand: G3, A3, B3, C4, D4, E4, F4, G4. The fourth measure is a rest in both staves. Fingering is indicated by numbers 1, 3, and 5 above the notes in the right hand.

SCALE EXERCISE 5

Musical score for Scale Exercise 5 in 6/8 time. The score consists of four measures. The first measure contains a descending scale in the right hand: G4, F4, E4, D4, C4, B3, A3, G3. The second measure contains an ascending scale in the right hand: G3, A3, B3, C4, D4, E4, F4, G4. The third and fourth measures are rests in both staves. Fingering is indicated by numbers 1, 3, and 5 above the notes in the right hand.



A MINOR INTRO



Pop chords can be used to support scale practice.
Let's explore playing with A minor notes.

POP CHORDS IN A MINOR

The A minor scale is a natural minor scale. The notes are A, B, C, D, E, F, G, A. The root of the scale is A. The chords are named after their root notes.

SAMPLE

A MINOR - i

F MAJOR - VI

G MAJOR - VII

A MINOR SET TWO

A MINOR - i

F MAJOR - VI

G MAJOR - VII

POP CHORD PRACTICE 1

PLAY WITH PEDAL

Musical score for Pop Chord Practice 1, 4/4 time signature. The piece consists of two measures. The right hand (treble clef) plays a melodic line with fingerings 1, 3, 1, 5, 5, 1, 3, 1. The left hand (bass clef) plays a bass line with a pedal point on the fifth degree of the scale, indicated by a '5' below the first note. The notes in the bass line are G, F, E, D, C, B, A, G.

POP CHORD PRACTICE 2

Musical score for Pop Chord Practice 2, 4/4 time signature. The piece consists of two measures. The right hand (treble clef) plays a melodic line with a fingered 5. The left hand (bass clef) plays a bass line with a pedal point on the fifth degree of the scale, indicated by a '5' below the first note. The notes in the bass line are G, F, E, D, C, B, A, G.

POP CHORD PRACTICE 3

PLAY WITH PEDAL

Musical score for Pop Chord Practice 3, 4/4 time signature. The piece consists of two measures. The right hand (treble clef) plays a melodic line with fingerings 1, 3, 1, 5, 5, 1, 3, 1. The left hand (bass clef) plays a bass line with a pedal point on the fifth degree of the scale, indicated by a '5' below the first note. The notes in the bass line are G, F, E, D, C, B, A, G.



ANDREA DOW

FALLEN



Steadily

1

mp

5

With pedal

5

1 3 1 5

mf

SAMPLE

Detailed description: This block contains the first system of musical notation. It features a grand staff with a treble and bass clef. The time signature is 4/4. The first system covers measures 1 through 4. The treble clef part begins with a whole note chord (C4, E4, G4) and continues with a series of quarter notes: C4, E4, G4, A4, B4, C5, B4, A4, G4, E4, C4. The bass clef part consists of a steady accompaniment of quarter notes: C3, E3, G3, A3, B3, C4, B3, A3, G3, E3, C3. A large, semi-transparent watermark reading 'SAMPLE' is overlaid diagonally across the page.

Detailed description: This block contains the second system of musical notation, covering measures 5 through 12. The treble clef part continues with a series of quarter notes: C5, B4, A4, G4, E4, C4. The bass clef part continues with quarter notes: C3, E3, G3, A3, B3, C4, B3, A3, G3, E3, C3. The watermark 'SAMPLE' is still visible.

13

f

5 1 3 1 3 1 5

Detailed description: This block contains the third system of musical notation, covering measures 13 through 16. The treble clef part features a series of half notes: C5, B4, A4, G4, E4, C4. The bass clef part continues with quarter notes: C3, E3, G3, A3, B3, C4, B3, A3, G3, E3, C3. The watermark 'SAMPLE' is still visible.

AMINOR

17

mp

21

f

1 3 1 5

1 3 1 5

29

p

5 1 3 1 3 1 5

3

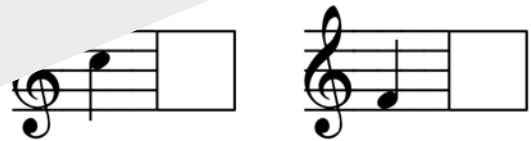
NOTE READING



Write the note
by



SAMPLE





C MAJOR SCALE PATHS

Play the four measures of music that rest on the path. Next, use a pencil to draw a new four-measure path. Play again.

A musical staff in 4/4 time, treble clef. The first measure contains a C4 quarter note, a D4 quarter note, an E4 quarter note, and an F4 quarter note. Fingerings are indicated above the notes: '1' above C, '3' above D, and '1' above E. The second measure contains G4, A4, B4, and C5 quarter notes, with a '5' above C5. The bass staff has a whole rest.

An empty musical staff with five lines.

A musical staff in 4/4 time, treble clef. The first measure contains G4, A4, B4, and C5 quarter notes, with a '1' above C5. The second measure contains D5, E5, F5, and G5 quarter notes, with a '1' below D5. The bass staff has a whole rest.

An empty musical staff with five lines.

A musical staff in 4/4 time, treble clef. The first measure contains D5, E5, F5, and G5 quarter notes, with a '1' above D5. The second measure contains A5, B5, C6, and D6 quarter notes, with a '3' above A5 and '1' above B5. The bass staff has a whole rest.

An empty musical staff with five lines. A pink box with the word 'FINISH' is positioned above the staff. The first measure contains a whole note on the C5 line, with a '1' above it. The second measure contains a whole note on the G4 line, with a '5' below it.

SAMPLE

A MINOR SCALE PATHS

Play the four measures of music that rest on the path. Next, use a pencil to draw a new four-measure path. Play again.



A musical staff in 4/4 time. The treble clef has a melody starting on G4, moving up stepwise to D5. Fingerings are indicated: 1 on G, 3 on A, 1 on B, and 5 on D. The bass clef has a whole rest.

A musical staff in 4/4 time. The treble clef has a whole rest. The bass clef has a melody starting on D5, moving down stepwise to G4. Fingerings are indicated: 1 on D, 3 on C, 1 on B, and 5 on G.

A musical staff in 4/4 time. The treble clef has a melody starting on G4, moving up stepwise to D5. Fingerings are indicated: 5 on G, 1 on A, 3 on B, and 1 on D. The bass clef has a whole rest.

A musical staff in 4/4 time. The treble clef has a melody starting on D5, moving down stepwise to G4. Fingerings are indicated: 1 on D, 3 on C, and 1 on B. The bass clef has a whole rest.

FINISH

 A musical staff in 4/4 time. The treble clef has a whole note G4 with a fingering of 1. The bass clef has a whole note G4 with a fingering of 5.



ANDREA DOW

EMBER



Quickly

1

mp

5

1 5

With pedal

f

SAMPLE

13

f

AMINOR

17

p

21

1 3 1

1 5

29

f

1 3 1 5

SAMPLE

Thank you for previewing

**WunderKeys Rock, Tuck & Roll:
One Octave Scales Solos in C
Major and A Minor**

[Click here to purchase this book.](#)