

RED RIDING HOOD

IN F MAJOR AND D MINOR FOR INTERMEDIATE PIANO

V.U.

LEVEL X



the
scarlet
solos

ANDREA AND TREVOR DOW'S
VERY USEFUL PIANO LIBRARY

This is a preview (17 of 42 pages).
Pages have been removed from
various sections.

the Scarlet Solos

— V. U. LEVEL X —

RED RIDING HOOD

IN F MAJOR AND D MINOR FOR INTERMEDIATE PIANO



Andrea and Trevor Dow's
VERY USEFUL PIANO LIBRARY

The Scarlet Solos by Andrea and Trevor Dow
Copyright © 2024 Teach Music Today Learning Solutions and WunderKeys Music
www.teachpianotoday.com and www.wunderkeys.com

All Rights Reserved. This book or parts thereof may not be reproduced in any form, stored in any retrieval system, or transmitted in any form by any means - electronic, mechanical, photocopy, recording, or otherwise - without prior written permission of the publisher, except as provided by copyright law.

Andrea and Trevor Dow's VERY USEFUL PIANO LIBRARY

V. U. **LEVEL X**

The Scarlet Solos weaves a musical tale through powerful piano pieces and their breathtaking melodies. It is designed to help intermediate students gain confidence playing in the two-octave F major and D minor scales.



4

Warm-up Exercises

22

Sunbeams

6

Scarlet

26

Note Reading

10

Footsteps

28

Questions

14

Note Reading

32

Rhythm Work

16

Shadows

34

Pounce

20

Sight Reading

38

Whisper



"In the soft
rays of morn, kindness
sets forth
S"

Sample

A musical score for piano and voice. The piano part is in the lower register, starting with a mezzo-piano (*mp*) dynamic and moving to a forte (*f*) dynamic. The voice part is in the upper register, featuring a melodic line with various dynamics and articulation marks. The score is divided into four measures. The first measure has a mezzo-piano (*mp*) dynamic. The second measure has a forte (*f*) dynamic. The third measure has a forte (*f*) dynamic. The fourth measure has a forte (*f*) dynamic. The piano part includes fingerings: 1, 4, 1, 3, 1, 4, 3, 5. The voice part includes a slur over the first two measures and a slur over the last two measures.

9

mp

mf

2 1 4 2 1 2 1 2 3 1 2 5 1 3

Detailed description: This system contains measures 9 through 12. The treble clef staff begins with a whole rest in measure 9, followed by eighth notes in measures 10 and 11, and a sixteenth-note triplet in measure 12. The bass clef staff features a steady eighth-note accompaniment. Fingerings are indicated by numbers 1-5 above notes. Dynamics *mp* and *mf* are marked.

13

5 5 2 1 3 1

Detailed description: This system contains measures 13 through 16. The treble clef staff has a sixteenth-note triplet in measure 13, followed by eighth notes in measures 14 and 15, and a whole note in measure 16. The bass clef staff continues with eighth-note accompaniment. Fingerings are indicated by numbers 1-5 above notes.

Detailed description: This system contains measures 17 through 20. The treble clef staff features a half note in measure 17, followed by quarter notes in measures 18 and 19, and a half note in measure 20. The bass clef staff continues with eighth-note accompaniment.

mf

2 1

Detailed description: This system contains measures 21 through 24. The treble clef staff has a half note in measure 21, followed by quarter notes in measures 22 and 23, and a half note in measure 24. The bass clef staff continues with eighth-note accompaniment. Fingerings are indicated by numbers 1-2 above notes.

25

mp f

2 2 5 1 4

This system contains measures 25 through 28. The treble clef part begins with a whole rest, followed by quarter notes G4, A4, and B4, and a half note C5. The bass clef part consists of eighth notes G3, A3, B3, C4, D4, E4, F4, and G4. Measure 26 features a slur over the treble notes and a finger number '2' above the first note. Measure 27 has a finger number '2' above the second note. Measure 28 starts with a finger number '5' above the first note, followed by '1' and '4' above the second and third notes respectively. The dynamic changes from *mp* to *f* at the start of measure 28.

29

mp f

2 5 1 4

This system contains measures 29 through 32. The treble clef part begins with a whole rest, followed by quarter notes G4, A4, and B4, and a half note C5. The bass clef part consists of eighth notes G3, A3, B3, C4, D4, E4, F4, and G4. Measure 30 features a slur over the treble notes and a finger number '2' above the first note. Measure 31 has a finger number '5' above the first note, followed by '1' and '4' above the second and third notes respectively. Measure 32 starts with a finger number '5' above the first note, followed by '1' and '4' above the second and third notes respectively. The dynamic changes from *mp* to *f* at the start of measure 31.

This system contains measures 33 through 36. The treble clef part begins with a whole rest, followed by quarter notes G4, A4, and B4, and a half note C5. The bass clef part consists of eighth notes G3, A3, B3, C4, D4, E4, F4, and G4. Measure 34 features a slur over the treble notes and finger numbers '1' and '4' above the first and second notes respectively. Measure 35 has a finger number '5' above the first note, followed by '1' and '4' above the second and third notes respectively. Measure 36 starts with a finger number '5' above the first note, followed by '1' and '4' above the second and third notes respectively.

mp f

5 1 4

This system contains measures 37 through 40. The treble clef part begins with a whole rest, followed by quarter notes G4, A4, and B4, and a half note C5. The bass clef part consists of eighth notes G3, A3, B3, C4, D4, E4, F4, and G4. Measure 38 features a slur over the treble notes and finger numbers '1' and '4' above the first and second notes respectively. Measure 39 has a finger number '5' above the first note, followed by '1' and '4' above the second and third notes respectively. Measure 40 starts with a finger number '5' above the first note, followed by '1' and '4' above the second and third notes respectively. The dynamic changes from *mp* to *f* at the start of measure 39.

41

mp *mf*

45

mp *f*

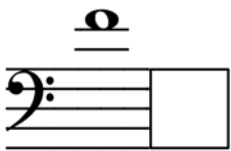
Sample

p 8^{vb}

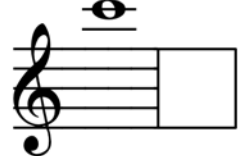
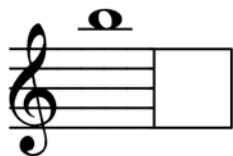
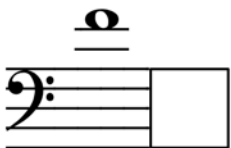
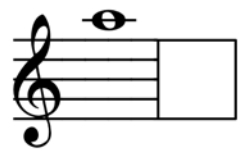
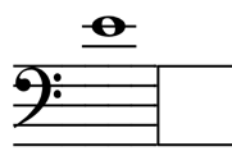
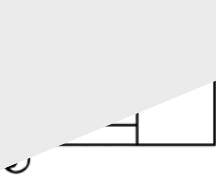
p 8^{vb}

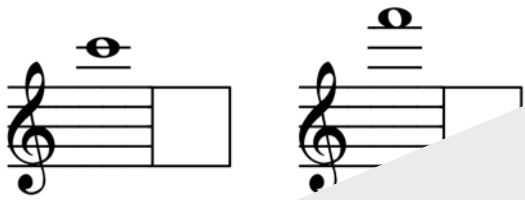
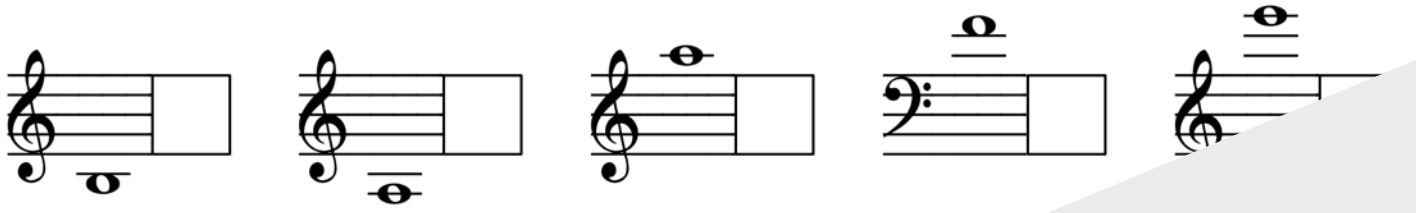
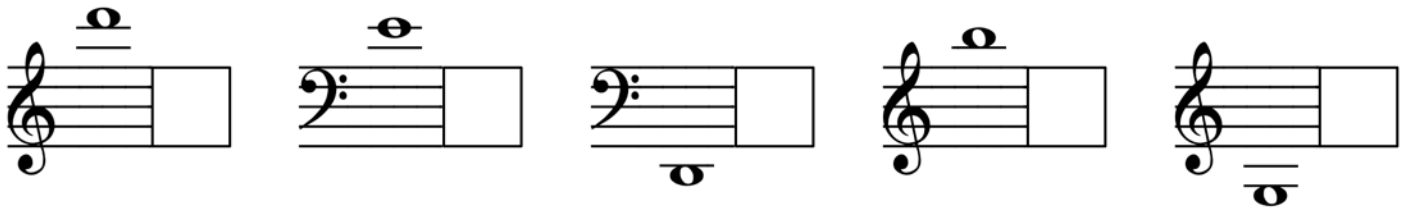
Timed Test

Write the ledger line note names in the boxes.
Record your time.

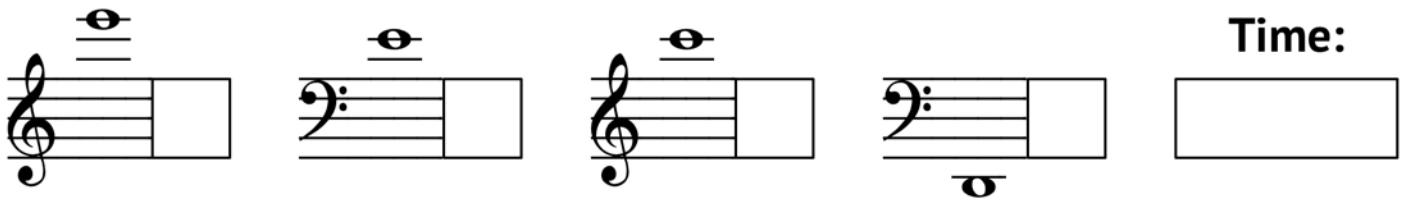
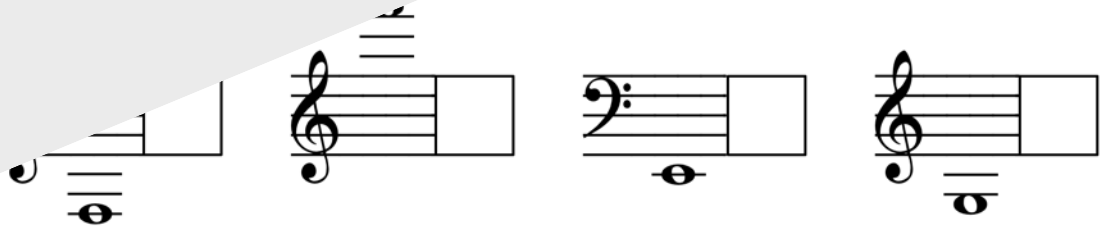
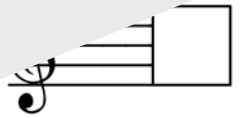


Sample





Sample





Sight Reading 1

Play the four measures of music that rest on the path. Next, use a pencil to draw a new four-measure path. Play again.

FINISH

Sight Reading 2

Play the four measures of music that rest on the path. Next, use a pencil to draw a new four-measure path. Play again.



Musical notation for the first measure. It features a grand staff with a treble clef and a bass clef. The key signature has one flat (B-flat). The time signature is 6/8. The melody in the treble clef starts with a quarter rest, followed by a quarter note G4 (fingered 1), a quarter note A4 (fingered 5), and a dotted quarter note B4. The bass clef accompaniment consists of a steady eighth-note pattern: G3, A3, B3, G3, A3, B3. A red square is partially visible at the bottom of the box.

Musical notation for the second measure. It features a single treble clef staff. The melody continues from the first measure: a quarter note C5 (fingered 1), a quarter note D5 (fingered 5), and a dotted quarter note E5. The bass clef accompaniment continues with the same eighth-note pattern: G3, A3, B3, G3, A3, B3.

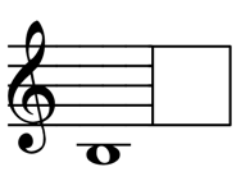
Musical notation for the third measure. It features a grand staff with a treble clef and a bass clef. The melody in the treble clef starts with a quarter note F5 (fingered 5), followed by a quarter note G5 (fingered 1), and a quarter note A5 (fingered 2). The bass clef accompaniment continues with the eighth-note pattern: G3, A3, B3, G3, A3, B3.

Musical notation for the fourth measure. It features a grand staff with a treble clef and a bass clef. The melody in the treble clef consists of a single dotted half note B5. The bass clef accompaniment continues with the eighth-note pattern: G3, A3, B3, G3, A3, B3. A red box with the word "FINISH" in white capital letters is positioned above the staff.

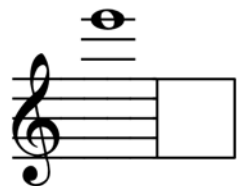
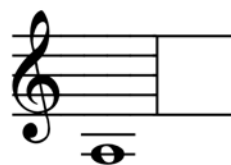
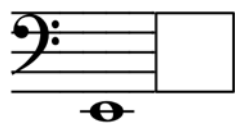
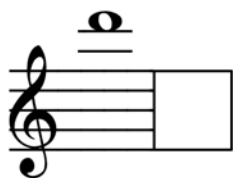
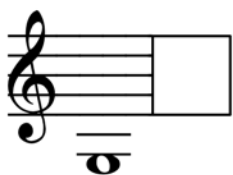
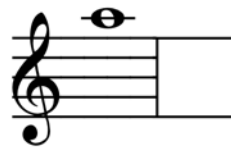
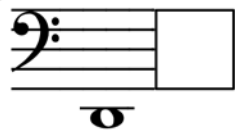
Sample

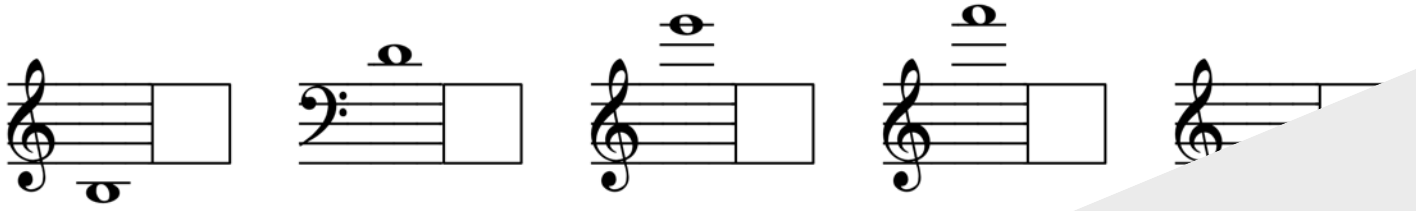
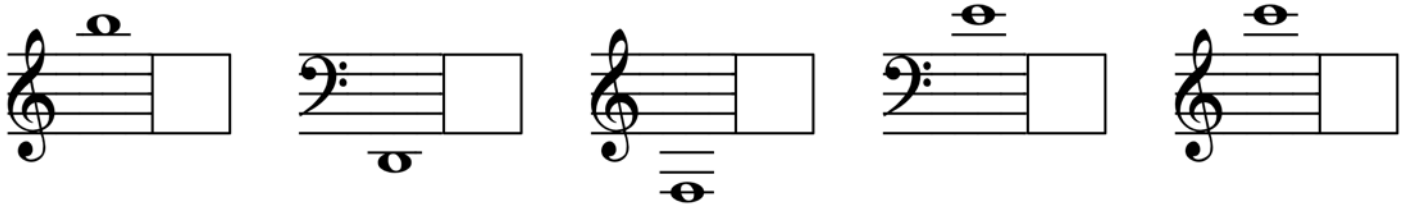
Timed Test

Write the ledger line note names in the boxes.
Record your time.

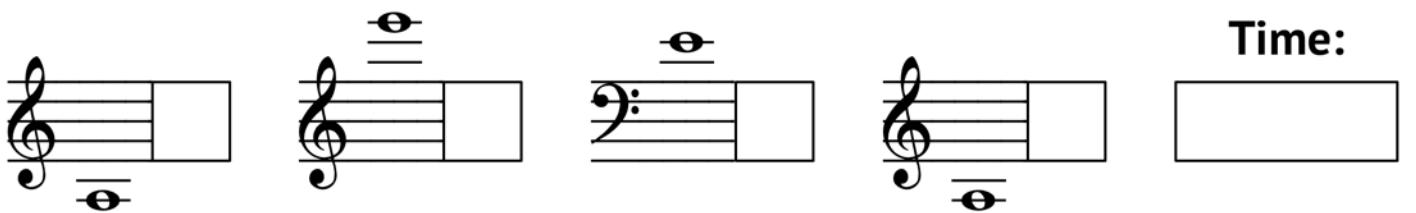
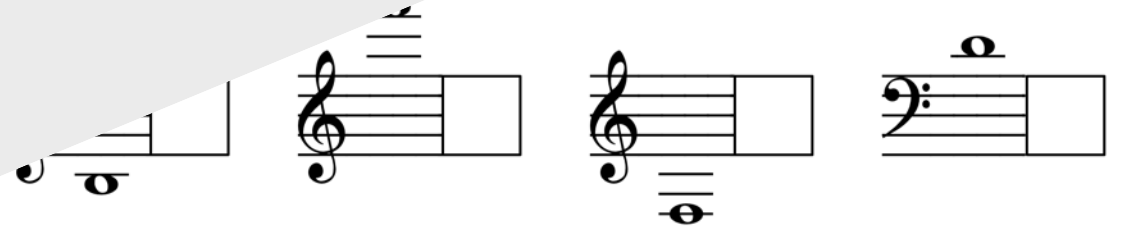
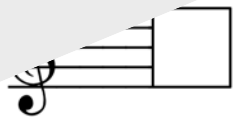


Sample





Sample



Time:



"With timid
questions, de
and men

Sample

A musical score for piano and voice. The piano part is written in G major (one flat) and 7/8 time. It consists of two systems of staves. The first system has two staves: a treble clef staff with a melodic line and a bass clef staff with a rhythmic accompaniment. The second system also has two staves. The piano part includes dynamic markings such as *mf* and *f*. The voice part is written in the treble clef staff of the second system, featuring a melodic line with a fermata and a first ending bracket. The score is partially obscured by a large, semi-transparent watermark that reads "Sample".

9

p

1 5 1 5 2

This system contains measures 9 through 12. The right hand starts with a half note G4, followed by a half note F4. Measures 10 and 11 feature eighth notes G4, A4, B4, and C5, with fingerings 1 and 5. Measure 12 continues with eighth notes G4, A4, B4, and C5, with fingerings 1, 5, and 2. The left hand plays a steady eighth-note accompaniment in the bass clef. A dynamic marking of *p* is present in the first measure.

13

1 1 4

This system contains measures 13 through 16. The right hand plays eighth notes G4, A4, B4, and C5, with fingerings 1, 1, and 4. The left hand continues with eighth-note accompaniment. A dynamic marking of *p* is present in the first measure.

3

This system contains measures 17 and 18. The right hand plays eighth notes G4, A4, and B4, with a fingering of 3. The left hand continues with eighth-note accompaniment.

p *mp*

5 1

This system contains measures 19 through 22. The right hand plays half notes G4 and F4, with fingerings 5 and 1. The left hand continues with eighth-note accompaniment. Dynamic markings of *p* and *mp* are present in the first and third measures, respectively.

25

mf

29

Sample

p

2

mp

41

mf

2

45

3

Sample

4

1

8vb

ff

1 5

8va

5

Thank you for previewing

The Scarlet Solos
V. U. Level X

[Click here to purchase this book.](#)