

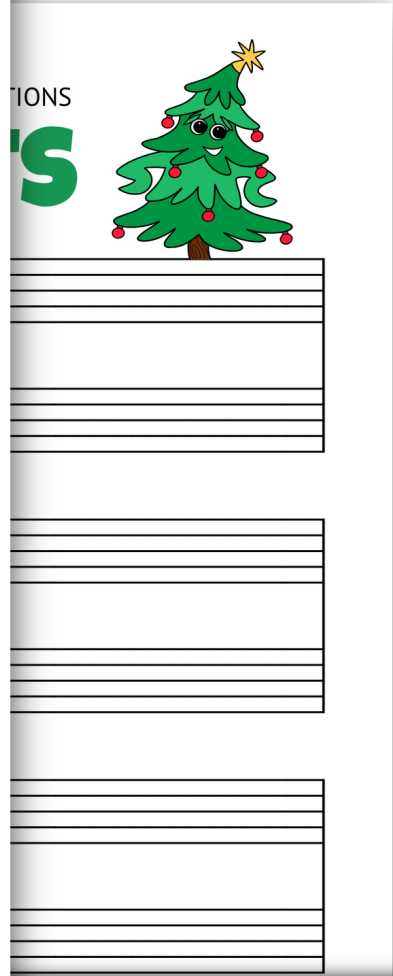
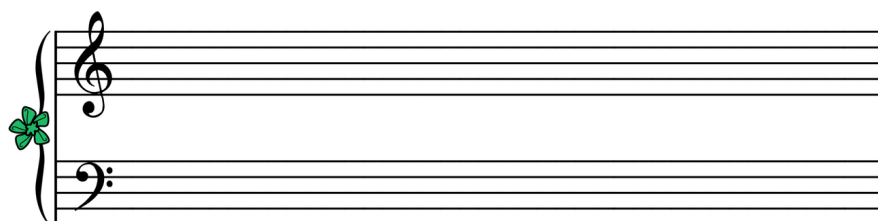
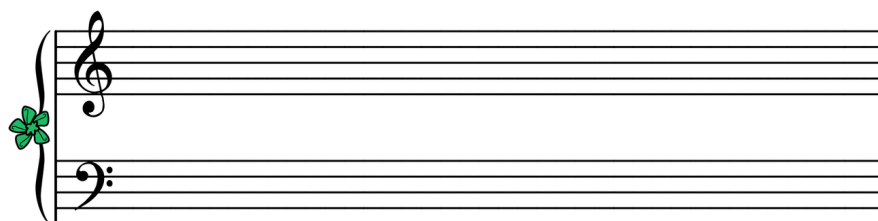
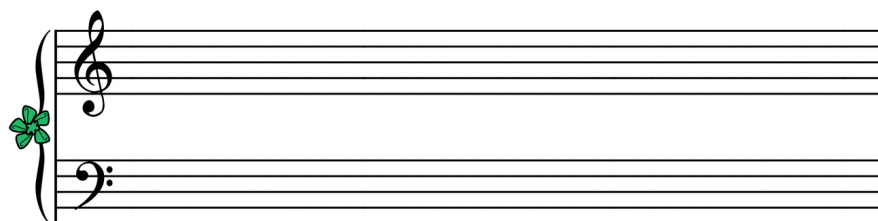
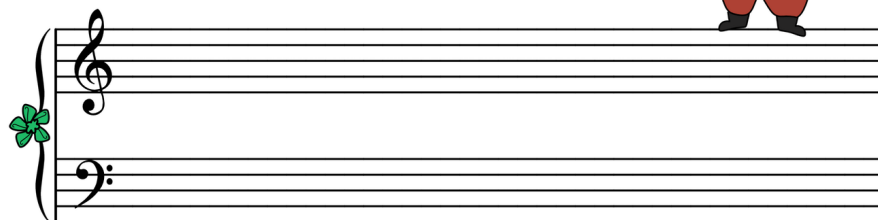


With our Christmas-themed blank staff paper your students can compose songs, explore theory, practice ear training, analyze chord progressions, and play with note printing.

**CHRISTMAS STAFF PAPER**

STAFF PAPER FOR YOUR CHRISTMAS CREATIONS

**JINGLEJOTS**



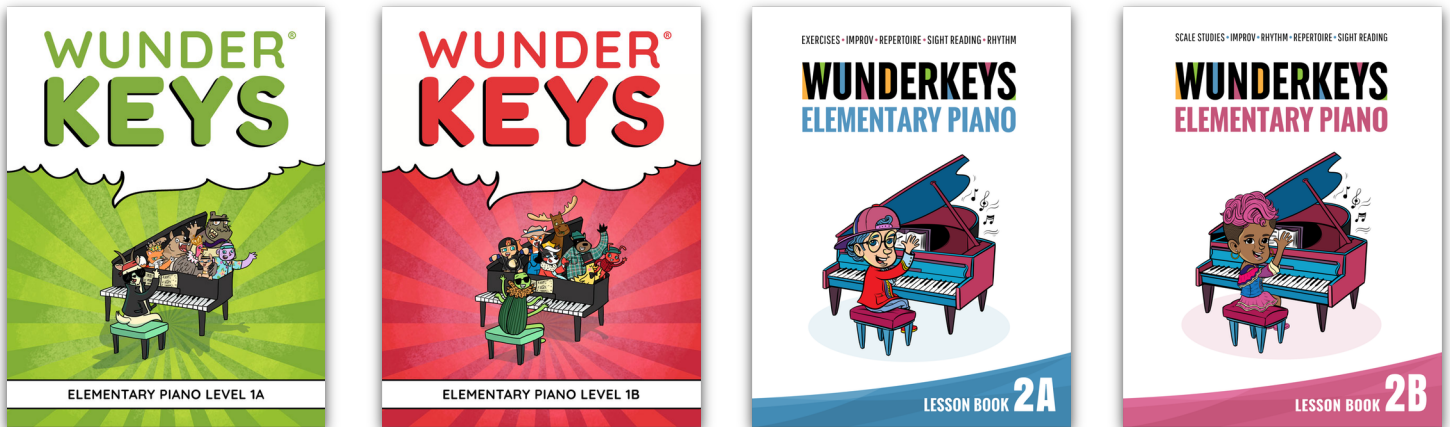
# CLICK FOR PRIMER METHOD BOOKS

---



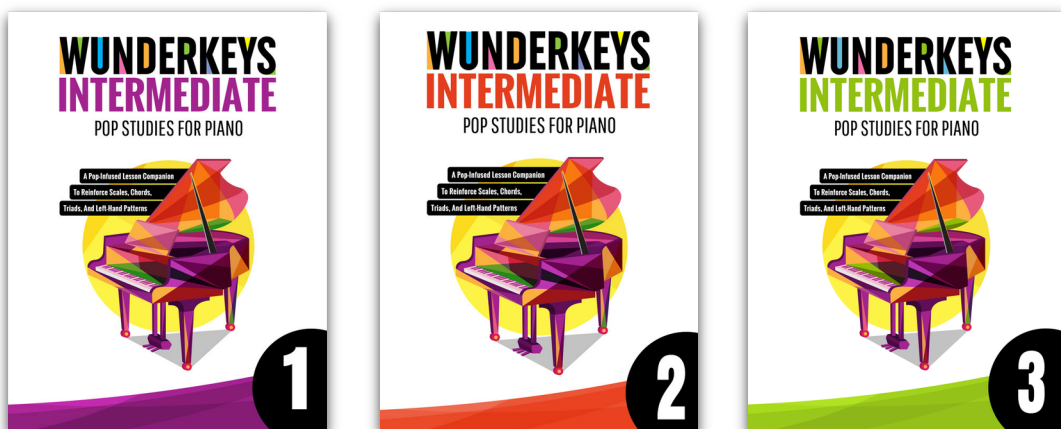
# CLICK FOR LEVEL 1 AND 2 METHOD BOOKS

---



# CLICK FOR INTERMEDIATE METHOD BOOKS

---



STAFF PAPER FOR YOUR CHRISTMAS CREATIONS

# JINGLEJOTS



A musical staff consisting of two five-line staves. The top staff has a treble clef and the bottom staff has a bass clef. A green holly leaf is attached to the left side of the staff. A small cartoon Santa Claus figure is standing on the top line of the upper staff.

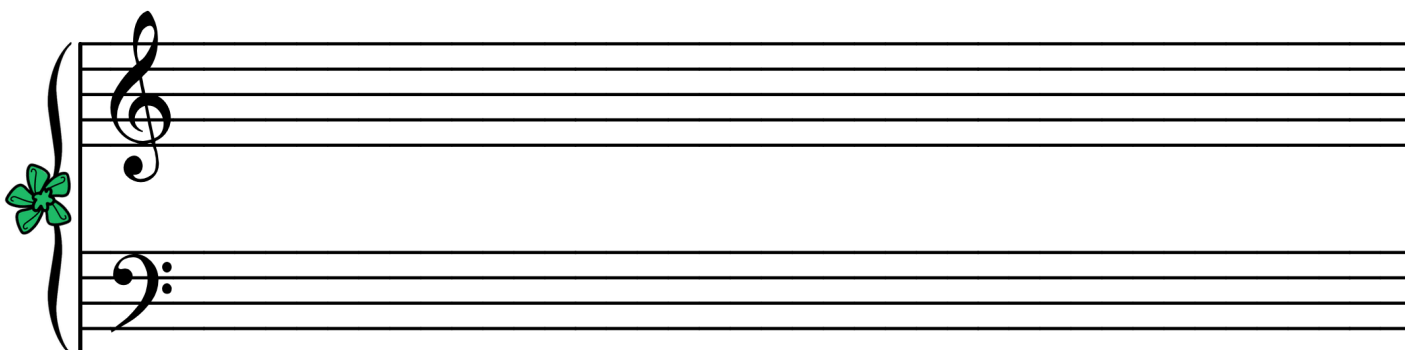
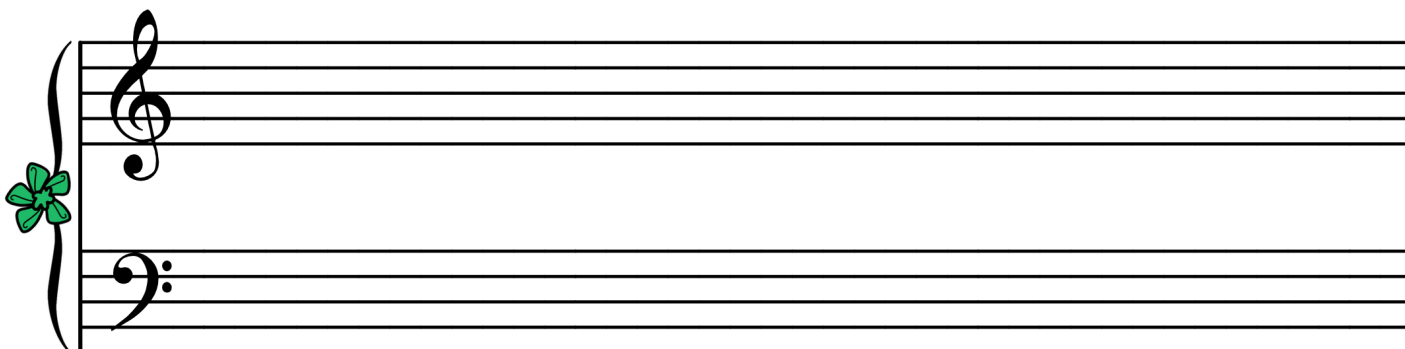
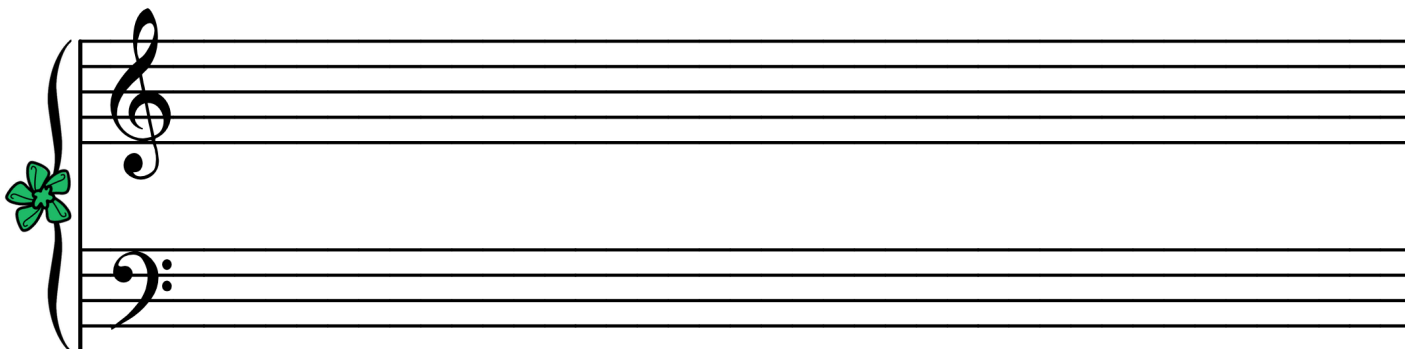
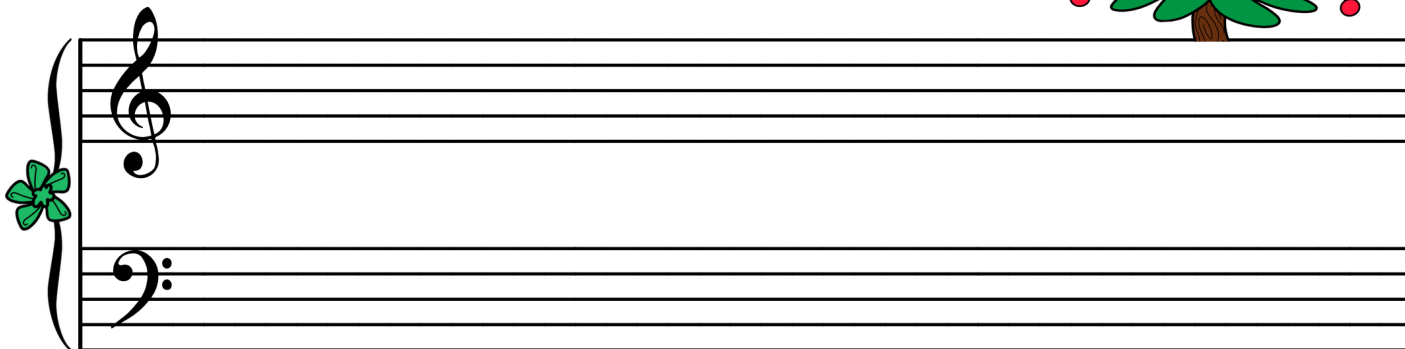
A musical staff consisting of two five-line staves. The top staff has a treble clef and the bottom staff has a bass clef. A green holly leaf is attached to the left side of the staff.

A musical staff consisting of two five-line staves. The top staff has a treble clef and the bottom staff has a bass clef. A green holly leaf is attached to the left side of the staff.

A musical staff consisting of two five-line staves. The top staff has a treble clef and the bottom staff has a bass clef. A green holly leaf is attached to the left side of the staff.

STAFF PAPER FOR YOUR CHRISTMAS CREATIONS

# JINGLE JOTS



STAFF PAPER FOR YOUR CHRISTMAS CREATIONS

# JINGLEJOTS

