



With today's printable pack, your intermediate piano students can reinforce common left-hand patterns in C major and A minor.

LEFT-HAND PATTERNS

Early Intermediate Piano

LH PATTERN 1



Practice the left-hand pattern on each chord and then on the chord progression:

Four bass clef staves in 3/4 time, each showing a left-hand pattern for a specific chord:

- CM (I): C4, E4, G4
- FM (IV): F4, A4, C5
- GM (V): G4, B4, D5
- Am (vi): A3, C4, E4

A single bass clef staff in 3/4 time showing a chord progression of CM (I), FM (IV), GM (V), and Am (vi). The left-hand pattern is repeated under each chord, with a '5' below the first note of each chord.

IMPROV

Using any combination of notes from the **C Major 5-Finger Scale**, practice improvising a melody to match the right-hand rhythm as you play the left-hand chord progression.

Two staves in 3/4 time. The top staff is the right hand with a melody of quarter notes: C4, E4, G4, A4, B4, C5, B4, A4, G4, F4, E4, D4. The bottom staff is the left hand with the chord progression from the previous section, with a '5' below the first note of each chord.

Two staves in 3/4 time. The top staff is the right hand with a melody of quarter notes: C4, E4, G4, A4, B4, C5, B4, A4, G4, F4, E4, D4. The bottom staff is the left hand with the chord progression from the previous section, with a '5' below the first note of each chord.

Early In

LH P

Practice the left-

Bass clef staff in 3/4 time showing a left-hand pattern for Am (i) with a '5' below the first note.

Bass clef staff in 3/4 time showing a left-hand pattern for Am (i) with a '5' below the first note.

IMPR

Two staves in 3/4 time showing a right-hand melody and a left-hand chord progression.

Two staves in 3/4 time showing a right-hand melody and a left-hand chord progression.



ord progression:

Bass clef staff in 3/4 time showing a left-hand pattern for Am (vi) with a '5' below the first note.

Bass clef staff in 3/4 time showing a left-hand pattern for Am (vi) with a '5' below the first note.

Treble C Major 5-
lody to match the
chord

Two staves in 3/4 time showing a right-hand melody and a left-hand chord progression.

Two staves in 3/4 time showing a right-hand melody and a left-hand chord progression.

Intermediate Piano

Composed in the keys of C major and A minor (two-octave scales), *The Cinderella Solos* is a story told through powerful piano pieces and their breathtaking melodies.

Your intermediate teen piano players will be captivated as they play through the soundtrack of this familiar tale, experienced in a brand new way!



A MODERN PLAYBOOK

IN C MAJOR AND A MINOR FOR INTERMEDIATE PIANO

V.U.

LEVEL X



ANDREA AND TREVOR DOW'S
VERY USEFUL PIANO LIBRARY

AVAILABLE ON AMAZON

BUY NOW

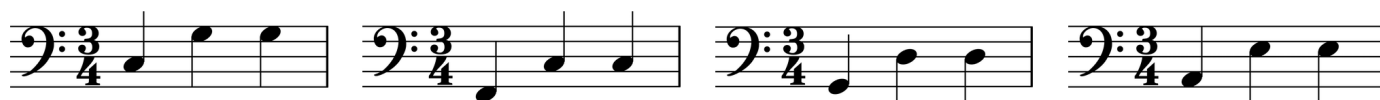
Andrea and Trevor Dow's
VERY USEFUL PIANO LIBRARY

Early Intermediate Piano

LH PATTERN 1



Practice the left-hand pattern on each chord and then on the chord progression:



CM (I)

FM (IV)

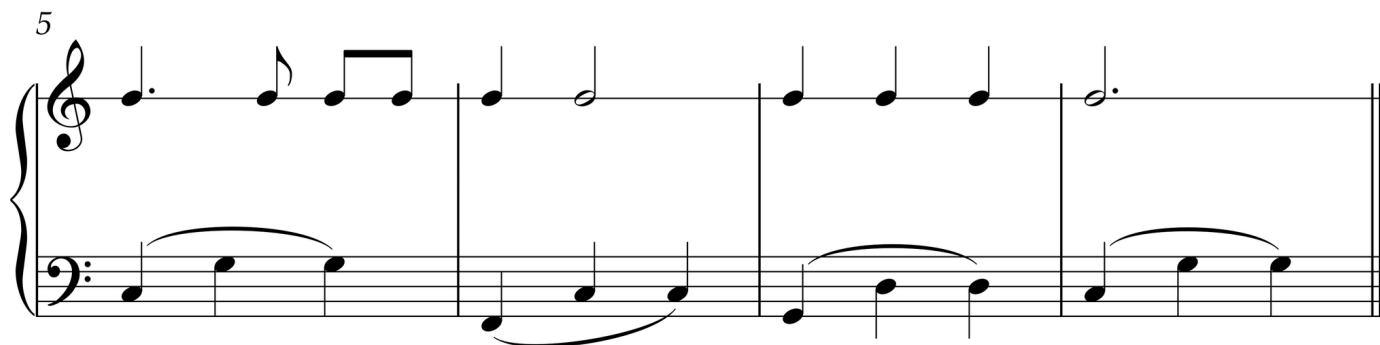
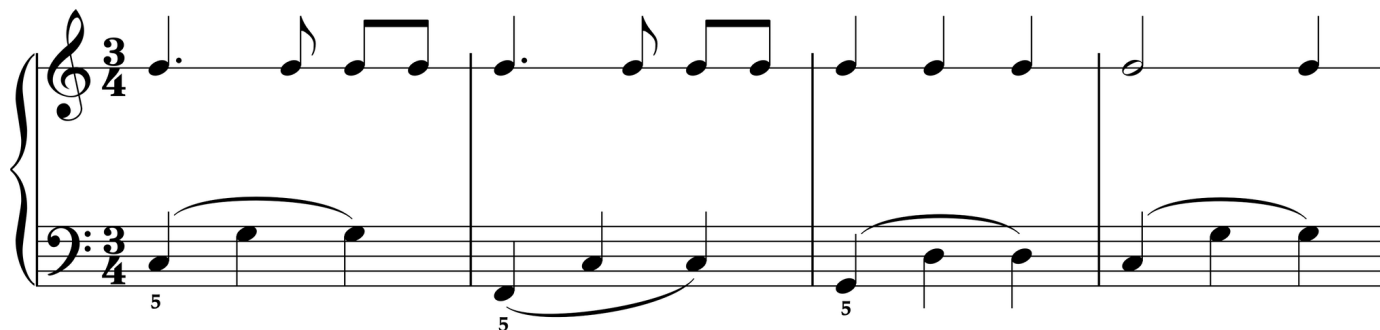
GM (V)

Am (vi)



IMPROV

Using any combination of notes from the **C Major 5-Finger Scale**, practice improvising a melody to match the right-hand rhythm as you play the left-hand chord progression.



Early Intermediate Piano

LH PATTERN 2



Practice the left-hand pattern on each chord and then on the chord progression:



Am (i)

Dm (iv)

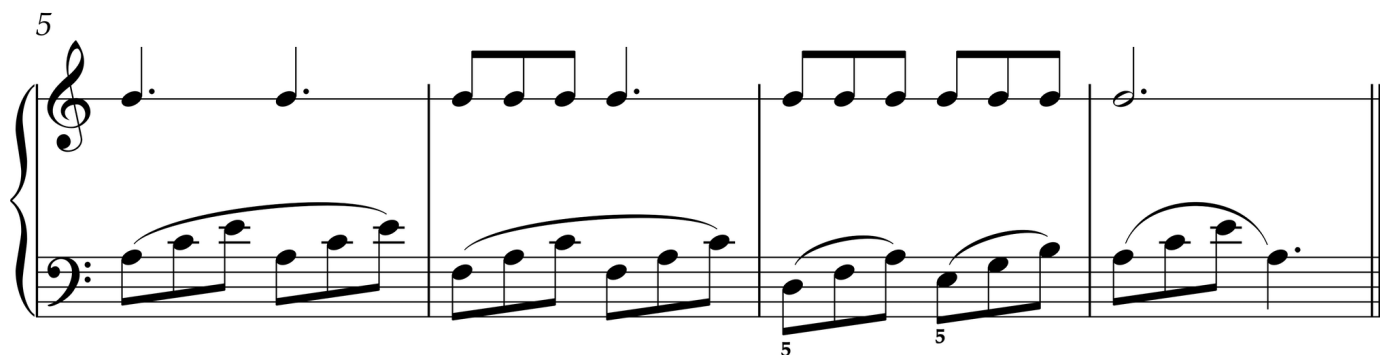
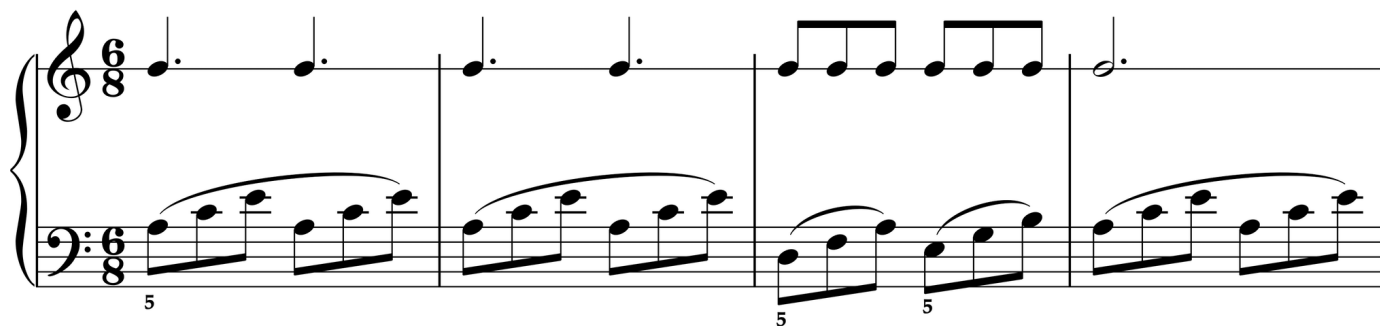
Em (v)

FM (VI)



IMPROV

Using any combination of notes from the **A Minor 5-Finger Scale**, practice improvising a melody to match the right-hand rhythm as you play the left-hand chord progression.



Early Intermediate Piano

LH PATTERN 3



Practice the left-hand pattern on each chord and then on the chord progression:

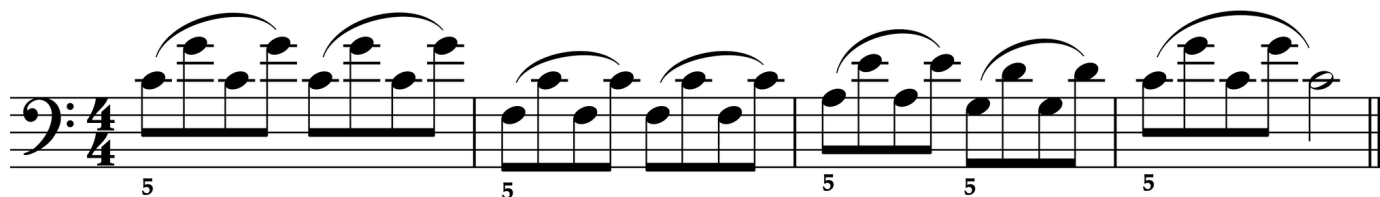


CM (I)

FM (IV)

GM (V)

Am (vi)



IMPROV

Using any combination of notes from the **Treble C Major 5-Finger Scale**, practice improvising a melody to match the right-hand rhythm as you play the left-hand chord

