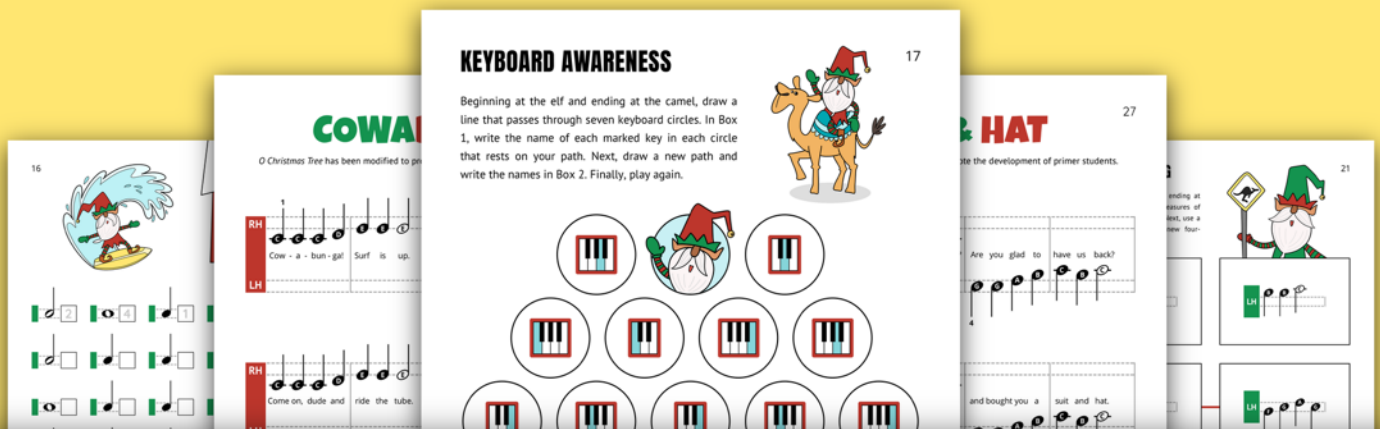


**V.U.**  
**LEVEL**  
**C**



# WORLD TOUR



ALPHA NOTE CHRISTMAS SONGS AND ACTIVITIES  
**FOR PRE-READING PIANO STUDENTS**

This is a preview (18 of 30 pages).  
Pages have been removed from  
various sections.

The "Elf-a" Notes  
**WORLD TOUR**

—V. U. LEVEL C—

ALPHA NOTE CHRISTMAS SONGS AND ACTIVITIES  
FOR PRE-READING PIANO STUDENTS



*Andrea and Trevor Dow's*  
VERY USEFUL PIANO LIBRARY

The "Elf-a" Notes World Tour by Andrea and Trevor Dow  
Copyright © 2022 Teach Music Today Learning Solutions and WunderKeys Music  
[www.teachpianotoday.com](http://www.teachpianotoday.com) and [www.wunderkeys.com](http://www.wunderkeys.com)

All Rights Reserved. This book or parts thereof may not be reproduced in any form, stored in any retrieval system, or transmitted in any form by any means -electronic, mechanical, photocopy, recording, or otherwise - without prior written permission of the publisher, except as provided by copyright law.

# Andrea and Trevor Dow's

## VERY USEFUL PIANO LIBRARY



## STUDENT INSTRUCTIONS

---

With this resource you will improve your keyboard awareness while playing *alpha notes* in middle C position.

The music in this pre-reading book is composed on the Wunder Staff. Alpha notes placed on the RH section are played with your right hand and alpha notes placed on the LH section are played with your left hand. The Wunder Staff helps you to see if alpha notes are moving up, moving down, or repeating.

The fingers on your right hand (RH) are numbered 1 to 5, beginning with your thumb. The fingers on your left hand (LH) are also numbered 1 to 5, beginning with your thumb. The Keyboard Guide on each song page will show you where to place your fingers on the white keys.



**4**

Warm-Up Exercises

**18**

The Outback | Arr. Good King Wenceslas

**6**

December 26th | Arr. Jolly Old St. Nicholas

**20**

Activity Set Three

**8**

Bon Voyage | Arr. Jingle Bells

**22**

Kapok Tree | An "Elf-a" Note Original

**10**

Activity Set One

**24**

Activity Set Four

**12**

Bumpy Ride | An "Elf-a" Note Original

**26**

Suit & Hat | Arr. Deck The Halls

**14**

Cowabunga | Arr. O Christmas Tree

**28**

Practice Tracker / Certificate

**16**

Activity Set Two

**30**

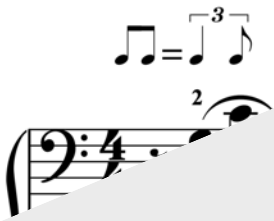
Book Level Chart



LH — RH

## TEACHER DUET

Student plays one c...



Sample



# BON VOYAGE

*Jingle Bells* has been modified to promote the development of primer students.

<b>RH</b>				
<b>LH</b>				
	Bon voy - age.	Off we go	up in - to the	sky.

<b>RH</b>		
<b>LH</b>		
	Oh, what fun	we go. Good-bye all, good- bye!

Sample



## FINGER STRENGTH EXERCISES

Place your right hand on a flat surface and *tap* the finger number combination displayed in Exercise 1. Repeat with your left hand. Play again with the remaining exercises.





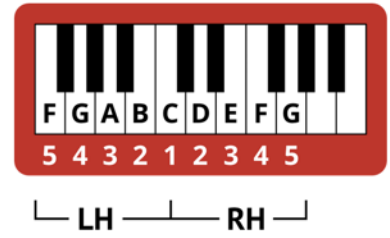
# KEYBOARD AWARENESS

Beginning at the elf and ending at the camel, draw a line that passes through seven keyboard circles. In Box 1, write the name of each marked key in each circle that rests on your path. Next, draw a new path and write the names in Box 2. Finally, play again.



A grid of 13 circles arranged in four rows. The top row has three circles: a keyboard icon, an elf icon, and a keyboard icon. The second row has four circles, all containing keyboard icons. The third row has three circles, all containing keyboard icons. The bottom row has two circles: a camel icon and a keyboard icon. A large, light gray diagonal watermark with the word "Sample" is overlaid across the grid.

1		2		3	
---	--	---	--	---	--



## TEACHER DUET

Student plays one of the...

5  
2  
1

# THE OUTBACK

*Good King Wenceslas* has been modified to promote the development of primer students.

**RH**

Here we are in the Out-back

**LH**

search-ing for a kan-ga-roo.

**RH**

Can we

st-y too.

**LH**

Let's go find one in the zoo!



## RH SIGHT READING

Beginning at the **START** and ending at the **FINISH**, play the four measures of music that rest on the path. Next, use a colored crayon to draw a new four-measure path. Play again.

Musical notation for the first measure. A red box labeled "RH" is on the left. A staff has a dashed line path. Notes are C, C, D, E. A "1" is above the first C.

**START**

Musical notation for the second measure. A red box labeled "RH" is on the left. A staff has a dashed line path. Notes are F, E.

Musical notation for the third measure. A red box labeled "RH" is on the left. A staff has a dashed line path. Notes are D, D.

**FINISH**

Musical notation for the fourth measure. A red box labeled "RH" is on the left. A staff has a dashed line path. Notes are G, G, C.

Musical notation for the fifth measure. A red box labeled "RH" is on the left. A staff has a dashed line path. Notes are G, G, C.

Sample

# LH SIGHT READING

Beginning at the **START** and ending at the **FINISH**, play the four measures of music that rest on the path. Next, use a colored crayon to draw a new four-measure path. Play again.



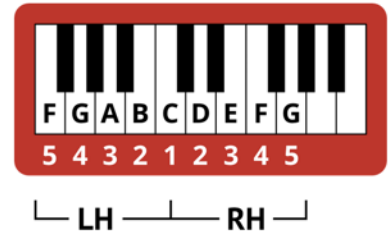
A musical notation box containing a green rectangular box labeled "LH" on the left. To its right is a treble clef with a note labeled "C" on the first line. Below the staff, there is a dashed line and a vertical line. A red box labeled "START" is positioned below the staff, with a red line pointing to the beginning of the path.

A musical notation box containing a green rectangular box labeled "LH" on the left. To its right are three notes on a treble clef staff: two notes labeled "B" and one note labeled "C". Below the staff, there is a dashed line and a vertical line.

A musical notation box containing a green rectangular box labeled "LH" on the left. To its right is a treble clef with a note labeled "G" on the second line. Below the staff, there is a dashed line and a vertical line.

A musical notation box containing a green rectangular box labeled "LH" on the left. To its right are three notes on a treble clef staff: one note labeled "A", one note labeled "B", and one note labeled "C". Below the staff, there is a dashed line and a vertical line. A red box labeled "FINISH" is positioned above the staff, with a red line pointing to the end of the path.

Sample



**TEACHER DUET**

Student plays one



Sample



# KAPOK TREE

An "Elf-a" Note Original by Andrea Dow

**RH**

From the vines the mon-keys chat. On a branch there lies a cat.

**LH**

5

**RH**

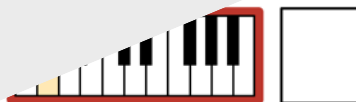
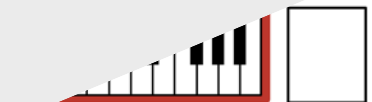
High a -

...en to see in the ka - pok tree.



In the boxes, write the names of the marked keys.

# TIMED TEST



Time:

Sample





LH ——— RH



# TEACHER DUET

Student plays one

5  
2  
1

1 2 5

# SUIT & HAT

*Deck The Halls* has been modified to promote the development of primer students.

**RH** 5  
G F E D C D E C  
San - ta did you miss your help - ers? Are you glad to have us back?

**LH**  
G G A B C B C  
4

**RH**  
G F E D  
We went out in our suits and hats

**LH**  
G G A B C B C  
We went out in our suits and hats with cheer. Let's start wrap - ping for next year!

Sample



Draw an X over  
1 present each day you  
practice with this book.

## PRACTICE TRACKER





CERTIFICA

Presented to:



YOUR PIANO SKILLS

Sample



Thank you for previewing

**The “Elf-a” Notes  
World Tour**

[Click here to purchase this book.](#)