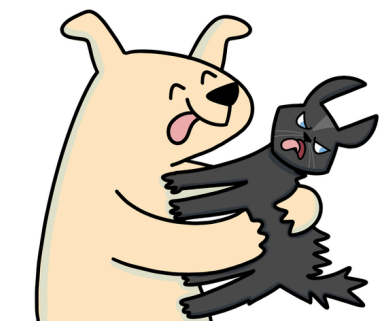


Use today's piano solo to reinforce sight reading skills with level 1B students.

**MIX AND MATCH MUSIC**



A Mix and Match  
**SIGHT READING**  
**SOLO**

The middle section of this piece has been replaced by a sight-reading challenge. When you reach this section, play the four measures of music that rest on the dotted path before playing the final two lines. Next, I will draw a new four-measure path. Follow this path when you play the piece again.

Andrea Dow

1

*mp* Cats are su-pe-ri-or. Dogs are in-fe-ri-or. My room-mate's the worst. It's like I've been cursed.

5

*mf* Cats are me-tic-u-lous. Dogs are ri-dic-u-lous. Life's not fair; I was here first!

**PATH**

**FINISH**

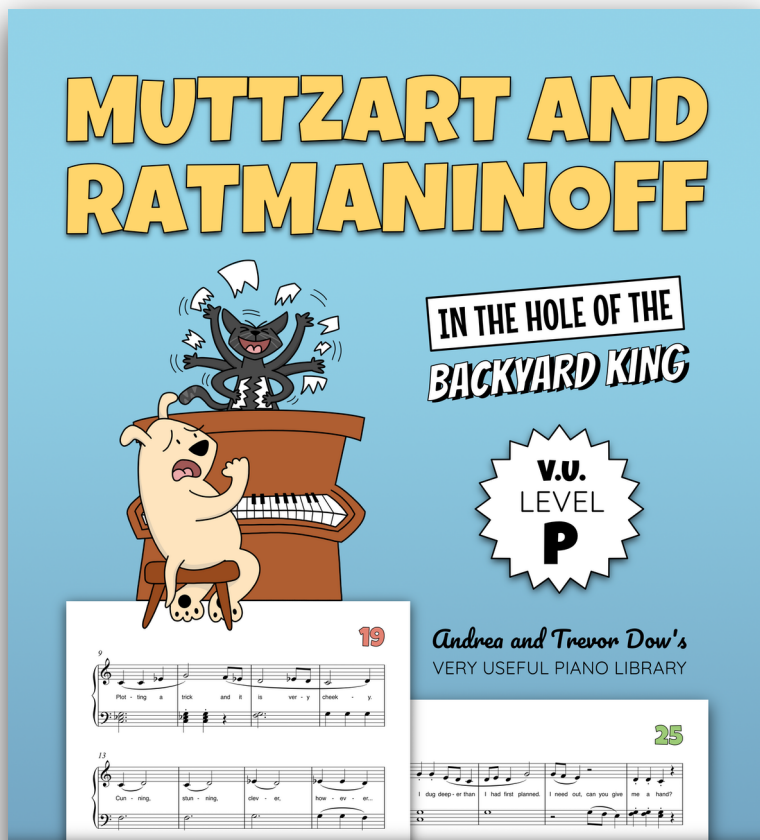
d bones. Who eats food from off the ground?!

# COMIC BOOK MUSIC

*Muttzart and Ratmaninoff, In The Hole of the Backyard King* is a laugh-out-loud, comic-based songbook packed with piano pieces and activities that reinforce playing with eighth notes. Inside this level 1B resource you will discover 8 piano songs, a teacher-student duet, a guided composing activity, note reading games, a sight-reading exercise, a practice tracker, and a certificate.



*"Mine came today and it's FABULOUS!! Hands down, the best VU book yet!"*



AVAILABLE ON AMAZON



*Andrea and Trevor Dow's*  
VERY USEFUL PIANO LIBRARY

COMIC-BASED SONGS AND ACTIVITIES  
**FOR LEVEL 1B PIANO STUDENTS**



# A Mix and Match SIGHT READING SOLO

The middle section of this piece has been replaced by a sight-reading challenge. When you reach this section, play the four measures of music that rest on the dotted path before playing the final two lines. Next, I will draw a new four-measure path. Follow this path when you play the piece again.

Andrea Dow

1

*mp* Cats are su-pe-ri-or. Dogs are in-fe-ri-or. My room-mate's the worst. It's like I've been cursed.

5

Detailed description: This block contains the first four measures of a musical score. The music is written for piano in 4/4 time. The treble clef staff has a key signature of one flat (Bb). The melody consists of quarter notes and eighth notes, with a dotted line connecting the notes across the four measures. The bass clef staff has whole notes in each measure. The lyrics are: "Cats are su-pe-ri-or. Dogs are in-fe-ri-or. My room-mate's the worst. It's like I've been cursed." The dynamic marking is *mp*. A measure number '1' is above the first measure, and a '5' is below the first measure of the next block.

5

*mf* Cats are me-tic-u-lous. Dogs are ri-dic-u-lous. Life's not fair; I was here first!

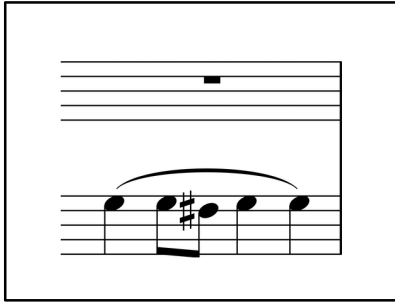
Detailed description: This block contains the next four measures of the musical score. The music is written for piano in 4/4 time. The treble clef staff has a key signature of one flat (Bb). The melody consists of quarter notes and eighth notes, with a dotted line connecting the notes across the four measures. The bass clef staff has whole notes in each measure. The lyrics are: "Cats are me-tic-u-lous. Dogs are ri-dic-u-lous. Life's not fair; I was here first!" The dynamic marking is *mf*. A measure number '5' is above the first measure.

**START**



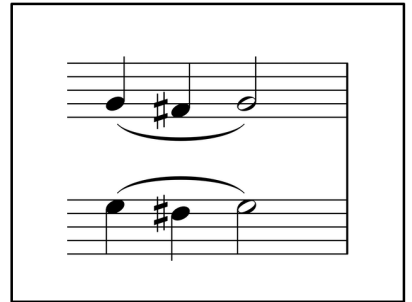
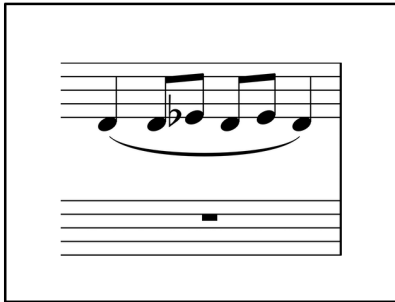
....

**PICK A PATH**



⋮

**FINISH**



13

*f* I wish I lived a-lone. He smells like dirt and bones. Who eats food from off the ground?!

17

*mp* Cats are mag-ni-fi-cent. I should be pres-i-dent. Then I'd send him to the pound!