

Andrea and Trevor Dow's
VERY USEFUL PIANO LIBRARY



NUTS FOR ALPHA NOTES



PRE-READING SONGS AND ACTIVITIES FOR
EARLY PRIMER PIANO STUDENTS

This is a preview (17 of 32 pages).
Pages have been removed from
various sections.

NUTS FOR **ALPHA NOTES**

—V. U. LEVEL C—

PRE-READING SONGS AND ACTIVITIES
FOR EARLY PRIMER PIANO STUDENTS



Andrea and Trevor Dow's
VERY USEFUL PIANO LIBRARY

Nuts For Alpha Notes by Andrea and Trevor Dow
Copyright © 2021 Teach Music Today Learning Solutions and WunderKeys Music
www.teachpianotoday.com and www.wunderkeys.com

All Rights Reserved. This book or parts thereof may not be reproduced in any form, stored in any retrieval system, or transmitted in any form by any means -electronic, mechanical, photocopy, recording, or otherwise - without prior written permission of the publisher, except as provided by copyright law.

Andrea and Trevor Dow's

VERY USEFUL PIANO LIBRARY



STUDENT INSTRUCTIONS

With this resource you will improve your keyboard awareness while playing *alpha notes* in middle C position.

The music in this pre-reading book is composed on the Wunder Staff. Alpha notes placed on the RH section are played with your right hand and alpha notes placed on the LH section are played with your left hand. The Wunder Staff helps you to see if alpha notes are moving up, moving down, or repeating.

The fingers on your right hand (RH) are numbered 1 to 5, beginning with your thumb. The fingers on your left hand (LH) are also numbered 1 to 5, beginning with your thumb. The Keyboard Guide on each song page will show you where to place your fingers on the white keys.



4

RH Exercises

6

Autumn Song

8

Showtime

10

Activity Set One

12

LH Exercises

14

Christmas Tree

16

Tweedle Deedle

18

Activity Set Two

20

Winter Winds

22

Activity Set Three

24

Forest Nook

26

Activity Set Four

28

All Set

30

Practice Tracker / Certificate



RH



SHOWTIME | TEACHER DUET

Musical notation for a teacher duet. It features a bass clef and a 4/4 time signature. The notation includes various notes, rests, and fingerings. A large, semi-transparent watermark reading "Sample" is overlaid diagonally across the page. The notation includes a treble clef staff with notes and fingerings (1, 2, 3, 4, 2, 1, 3, 5) and a bass clef staff with notes and fingerings (1, 2, 3, 4, 5).

SHOWTIME

When accompanied by the duet, play one octave higher than written.

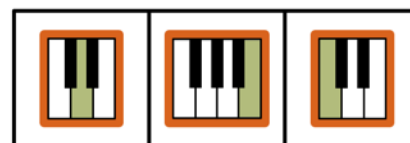
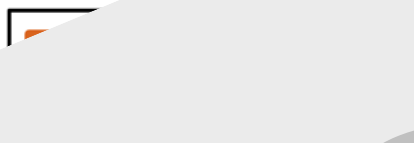
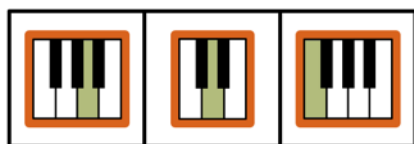
RH	
	<p>When it's frost - y on the ground, yel - low leaves start fall - ing down.</p>
LH	

RH	
	<p>Squir-rels av - 'rite shows. In the stump my T - V goes!</p>
LH	

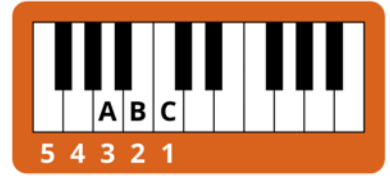
Sample

NAMING KEYS

Draw an X over the marked keyboard below each squirrel that matches the key name on its stump.



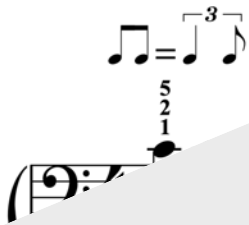
Sample



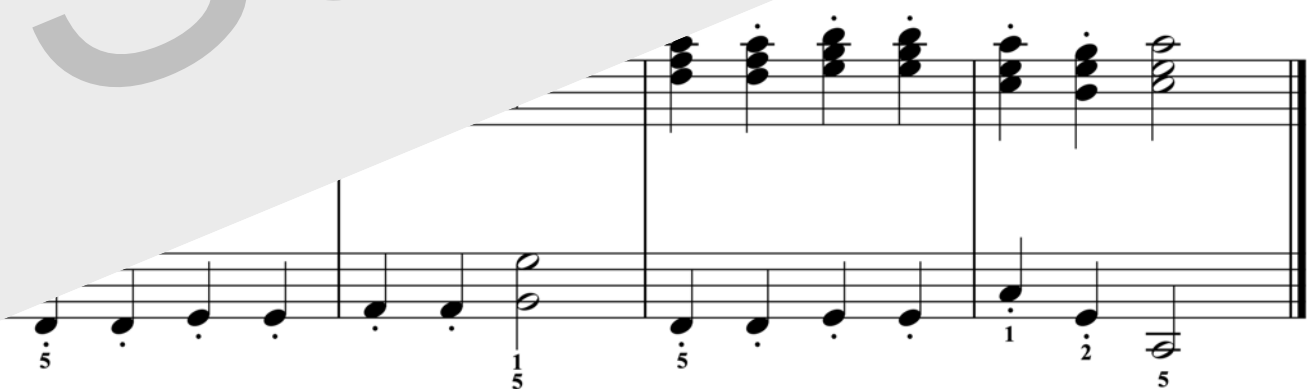
LH



CHRISTMAS TREE | TEACHER DUET



Sample



CHRISTMAS TREE

When accompanied by the duet, play one octave higher than written.

RH

Be - fore the snow gets too deep, I must find my Christ-mas tree.

LH

1

Detailed description: This musical system is divided into four measures. The first measure contains the lyrics 'Be - fore the snow' and has a finger number '1' below the first note. The second measure contains 'gets too deep,'. The third measure contains 'I must find my'. The fourth measure contains 'Christ-mas tree.' The notes are represented by stems with circular heads labeled A, B, or C. The RH staff is empty, and the LH staff contains the notes. The notes for 'Be - fore' are C, C, B, B. The notes for 'gets too deep,' are A, A, B. The notes for 'I must find my' are C, C, B, B. The notes for 'Christ-mas tree.' are C, B, C.

RH

Need a place to put it in. Now my win - ter can be - gin!

LH

Detailed description: This musical system is divided into four measures. The first measure contains the lyrics 'Need a place to put it in.' and has a finger number '1' below the first note. The second measure contains 'Now my win - ter'. The third measure contains 'can be - gin!'. The notes are represented by stems with circular heads labeled A, B, or C. The RH staff is empty, and the LH staff contains the notes. The notes for 'Need a place to put it in.' are A, B, B, A, A, B. The notes for 'Now my win - ter' are A, A, B, B. The notes for 'can be - gin!' are C, B, C.

KEYBOARD AWARENESS

Beginning at the squirrel and ending at the stump, draw a line that passes through seven keyboard circles. In Box 1, write the name of each marked key in each circle that rests on your path. Next, draw a new path and write the names in Box 2. Finally, play again.



A maze-like path starting from a squirrel and ending at a tree stump. The path is formed by circles containing piano keyboard icons. A large diagonal watermark "Sample" is overlaid on the page.

1	2	3
---	---	---

* Thumbs share C



LH — RH



WINTER WINDS | TEACHER DUET



Sample



WINTER WINDS

When accompanied by the duet, play one octave higher than written.

RH

I must prac - tice ev - 'ry day.

LH

I need my pi - an - o.

3

RH

I'll have

go fast,

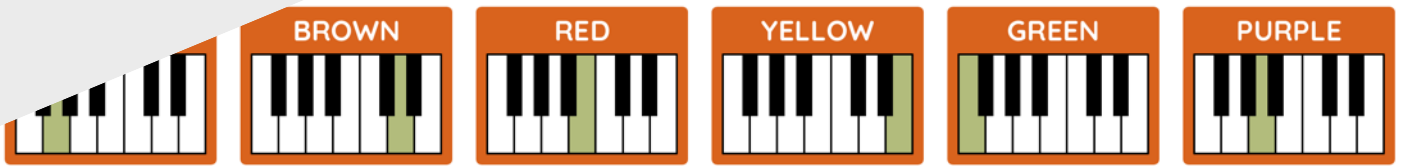
so it joins my squir - rel stash!

Sample

Color each leaf using the Crayon Guide. For example, if the key name inside a leaf is A, color that leaf purple.



Sample





LH RH



ALL SET | TEACHER DUET



Sample



ALL SET

When accompanied by the duet, play one octave higher than written.

RH

There, I fin - ished in a flash!

LH

I have the best squir - rel stash.

RH

All my

LH

out a list... There's not one thing I have missed!



Draw an X over
1 leaf each day you
practice with this book.

PRACTICE TRACKER



YOUR MUSIC **LEAVES**

Presented to:

CERTIFICA

Sample



BOOK LEVEL CHART FOR THE **VERY USEFUL PIANO LIBRARY**

PIANO GRADE	V. U. LEVEL	CONCEPTS (only main concepts listed)
EARLY PRIMER	A	black keys, finger numbers
	B	black keys, finger-number notes with rhythm
	C	alpha notes with rhythm (quarter, half, whole)
	D	early middle C position (ABCDE on the staff)
MID PRIMER	E	middle C position (all notes), stepping only
	F	middle C position, stepping only, 3/4 time
	G	middle C position, stepping and skipping
	H	C position, stacked notes
LATE PRIMER	I	C position, hands-together stepping
	J	C position, hands-together stepping and skipping
	K	C position, beginner LH accompaniment, quarter rests
LEVEL 1A	L	Level I-J-K concepts + staccato and legato
	M	treble C position, mid-piece hand movements
	N	harmonic intervals of a 2nd, 3rd, 4th, and 5th
LEVEL 1B	O	Level L-M-N concepts + accidentals (sharps and flats)
	P	Level L-M-N-O concepts + eighth notes
	Q	G position, low G position, accidentals, eighth notes

Thank you for previewing
Nuts For Alpha Notes

[Click here to purchase this book.](#)