



With today's activity your new primer students will have a blast playing with alpha notes.

**HALLOWEEN ALPHA NOTES**

**BAT'S NIGHT OUT**

Play one octave higher than written.

**RH**

When I flap a - round at night,      peo - ple run and scream with fright.

**LH**

**RH**

But when it is Hal - lo - ween,      I be - come part of the theme.

**LH**

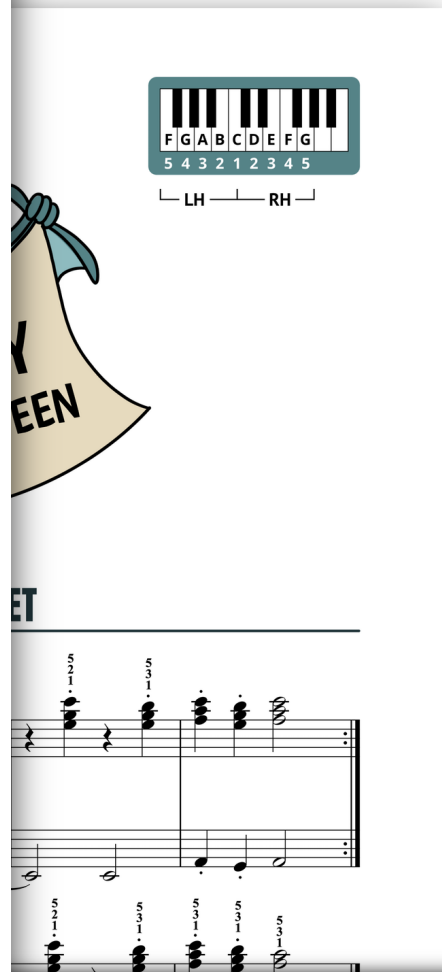
**RH**

Oooo - Oooo      Oooooooooo!      I'm dressed up just right!

**LH**

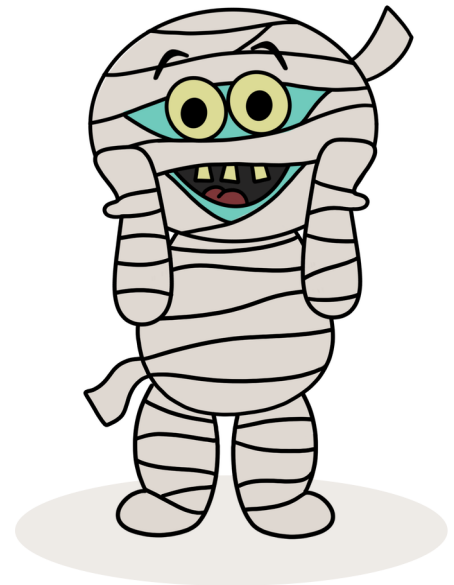


┌ LH ─── RH ───┘



# DO YOU NEED MORE HALLOWEEN MUSIC?!

Mid-primer piano students using *Mummy Rocks The Costume Contest* will gain confidence playing middle C music in 3/4 and 4/4 time with stepping and skipping notes. This exciting resource contains Halloween piano songs, note reading games, warm-up exercises, a rhythm activity, a sight reading activity, a practice tracker, and a certificate of achievement.



Andrea and Trevor Dow's  
VERY USEFUL PIANO LIBRARY

V.U.  
LEVEL  
G

# MUMMY

ROCKS THE  
COSTUME CONTEST

NOTE READING

Beginning at the mummy and ending at the bat, draw a line that passes through every note circle. In Box 1, write the name of each note in each circle that rests on your path. Next, draw a new path and write the note names in Box 2. Finally, play again.

21

CONTEST

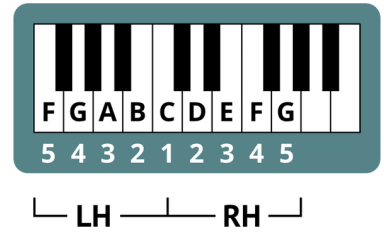
AST

HALLOWEEN SONGS AND ACTIVITIES  
FOR MID-PRIMER PIANO STUDENTS

AVAILABLE ON AMAZON

**BUY NOW**

Andrea and Trevor Dow's  
VERY USEFUL PIANO LIBRARY



## BAT'S NIGHT OUT | TEACHER DUET

Musical score for 'Bat's Night Out' Teacher Duet. The score is in 4/4 time and consists of two systems of piano and bass clef staves. The first system has a piano part with a forte (*f*) dynamic and a bass part with a triplet. The second system has a piano part with a piano (*p*) dynamic and a bass part with a forte (*f*) dynamic. Fingerings and articulation marks are provided throughout the score.

# BAT'S NIGHT OUT

Play one octave higher than written.

Musical notation for the first system. The right hand (RH) plays a melody of quarter notes: E4, E4, D4, E4. The left hand (LH) plays a bass line of quarter notes: A2, B2, C3, B2, A2, A2, A2, C3, B2, A2. The lyrics are: "When I flap a - round at night, peo - ple run and scream with fright."

Musical notation for the second system. The right hand (RH) plays a melody of quarter notes: E4, E4, D4, E4. The left hand (LH) plays a bass line of quarter notes: A2, B2, C3, B2, A2, A2, A2, C3, B2, A2. The lyrics are: "But when it is Hal - lo - ween, I be - come part of the theme."

Musical notation for the third system. The right hand (RH) plays a melody of quarter notes: E4, D4, E4. The left hand (LH) plays a bass line of quarter notes: C3, C3, B2, B2, A2. The lyrics are: "Oooo - Oooo Oooooooo! I'm dressed up just right!"