



With today's activity your primer piano students will have a blast composing *spooktacular* music.

**HALLOWEEN COMPOSING**



Let's Compose Some  
**MUMMY MUSIC**

Look at the rhythm below. Say the words while clapping the rhythm.

**1** Can you do the Mum - my Dance?

Place your hands on the keyboard in Middle C Position. Using A, B, Middle C, D, and E...

**2** Compose a melody to match the rhythm. You may use each key once, more than once, or not at all.

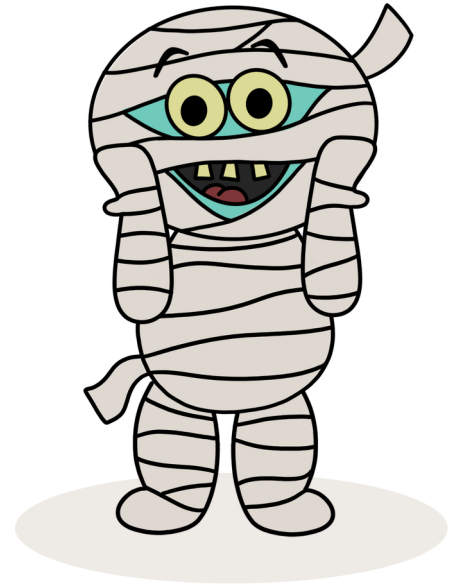
Continue experimenting on the keys until you are happy with a melody. Write it on the staff below. Use this melody (your motive) to fill in the missing measures in *The Mummy Dance*.

**3**

**THE MUMMY DANCE**

# HALLOWEEN MUSIC

Mid-primer piano students using *Mummy Rocks The Costume Contest* will gain confidence playing middle C music in 3/4 and 4/4 time with stepping and skipping notes. This exciting resource contains Halloween piano songs, note reading games, warm-up exercises, a rhythm activity, a sight reading activity, a practice tracker, and a certificate of achievement.



Andrea and Trevor Dow's  
VERY USEFUL PIANO LIBRARY

V.U.  
LEVEL  
G

# MUMMY

ROCKS THE  
COSTUME CONTEST

NOTE READING  
Beginning at the mummy and ending at the bat, draw a line that passes through every note circle. In Box 1, write the name of each note in each circle that rests on your path. Next, draw a new path and write the note names in Box 2. Finally, play again.

21

CONTEST

AST

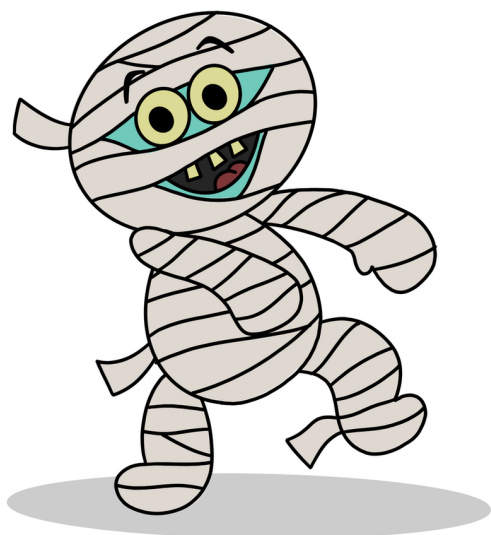
Andrea Dow

**HALLOWEEN SONGS AND ACTIVITIES  
FOR MID-PRIMER PIANO STUDENTS**

AVAILABLE ON AMAZON



Andrea and Trevor Dow's  
VERY USEFUL PIANO LIBRARY



Let's Compose Some

# MUMMY MUSIC

Look at the rhythm below. Say the words while clapping the rhythm.

Place your hands on the keyboard in Middle C Position. Using A, B, Middle C, D, and E...

**1** Can you do the Mum - my Dance?

4/4

**2** Compose a melody to match the rhythm. You may use each key once, more than once, or not at all.

Continue experimenting on the keys until you are happy with a melody. Write it on the staff below. Use this melody (your motive) to fill in the missing measures in *The Mummy Dance*.

**3**

# THE MUMMY DANCE

4/4

Can you do the *Mum - my Dance?* Hal - lo - ween's here, now's your chance!

Detailed description: This system contains the first four measures of the song. The treble clef staff has a 4/4 time signature. The first two measures are mostly obscured by a light blue rectangular highlight. The third measure contains the lyrics 'Hal - lo - ween's here,' and the fourth measure contains 'now's your chance!'. The bass clef staff has a 4/4 time signature and contains a simple bass line with four quarter notes in the third and fourth measures.

5

Can you do the *Mum - my Dance?* Groove a - long with me.

Detailed description: This system contains measures 5 through 8. The treble clef staff has a 4/4 time signature. The first two measures are obscured by a light blue rectangular highlight. The third measure contains the lyrics 'Groove a - long with' and the fourth measure contains 'me.'. The bass clef staff has a 4/4 time signature and contains a simple bass line with four quarter notes in the third and fourth measures.

9

1. Wrap your - self up head to toe. Hold your arms out wide.  
2. Make your legs stiff, move them slow. Sway from side to side.

Detailed description: This system contains measures 9 through 12. The treble clef staff has a 4/4 time signature. The first measure contains the lyrics '1. Wrap your - self up' and '2. Make your legs stiff,'. The second measure contains 'head to toe.' and 'move them slow.'. The third measure contains 'Hold your arms out' and 'Sway from side to'. The fourth measure contains 'wide.' and 'side.'. The system ends with repeat signs. The bass clef staff has a 4/4 time signature and contains a simple bass line with four quarter notes in the third and fourth measures.

13

Can you do the *Mum - my Dance?* Don't be ter - ri - fied!

Detailed description: This system contains measures 13 through 16. The treble clef staff has a 4/4 time signature. The first two measures are obscured by a light blue rectangular highlight. The third measure contains the lyrics 'Don't be ter - ri -' and the fourth measure contains 'fied!'. The bass clef staff has a 4/4 time signature and contains a simple bass line with four quarter notes in the third and fourth measures.