

andrea and trevor
DOW'S



PLAYING WITH NOTE PRINTING ACTIVITY BOOK

FOR PIANO, BOOK 1



NOTE PRINTING PIECES AND EXERCISES IN MIDDLE C POSITION AND C POSITION

This is a preview (25 of 81 pages).
Pages have been removed from
various sections.



PLAYING WITH NOTE PRINTING ACTIVITY BOOK

FOR PIANO, BOOK 1

NOTE PRINTING PIECES AND EXERCISES
IN MIDDLE C POSITION AND C POSITION



Andrea And Trevor Dow's Playing With Note Printing Activity Book For Piano, Book 1
Copyright © 2020 Teach Music Today Learning Solutions
www.teachpianotoday.com and www.wunderkeys.com

All Rights Reserved. This book or parts thereof may not be reproduced in any form, stored in any retrieval system, or transmitted in any form by any means -electronic, mechanical, photocopy, recording, or otherwise - without prior written permission of the publisher, except as provided by copyright law.



In this book, we have created an innovative approach to note reading where students build pre-composed piano pieces by printing the music on the page.

As they use our easy-to-follow note guides to put the pieces together, students will be committing notes to memory... once and for all!

And the best part? After building a piece, they are rewarded with a tune they can play.

For additional enjoyment, the note printing piano pieces are interspersed with game-based activities and exercises.

Let us show your piano students how to have fun learning to read music in Middle C Position and C Position!





- 4 Unit 1: B | Middle C | Middle C | D
- 18 Unit 2: A | B | Middle C | Middle C | D | E
- 32 Unit 3: A | B | Middle C | Middle C | D | E | F | G
- 46 Unit 4: F | G | A | B | Middle C | Middle C | D | E | F | G
- 60 Unit 5: Bass C | D | E | F | G | Middle C | D | E | F | G

*For more note reading practice, use this book along with
Andrea And Trevor Dow's Timed Note Reading Tests For Piano, Book 1*



AN INTRO

UNIT 2

In each box, draw a note that matches the first note.



B

A musical staff with a bass clef. A single quarter note is drawn on the second line of the staff. Below the staff is a rectangular box for drawing a matching note.

D

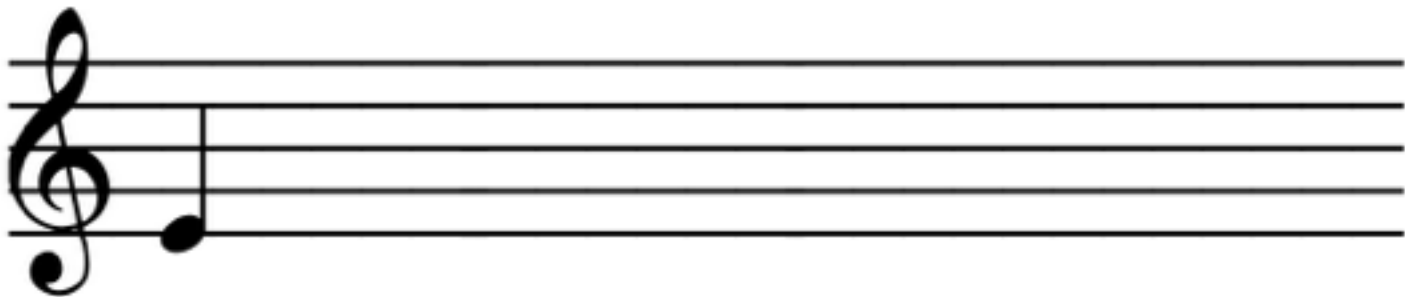
A musical staff with a treble clef. A single quarter note is drawn on the second space of the staff. Below the staff is a rectangular box for drawing a matching note.

Sample

A musical staff with a treble clef. It contains four notes: a quarter note on the first space, a quarter note on the second space, an eighth note on the second space, and a half note on the second space. Below the staff are four rectangular boxes for drawing matching notes.

PRACTICE

1. Using quarter notes, print a line of Es.



2. Using half notes, print a line of As.



3. Using whole notes, print a line of Es.

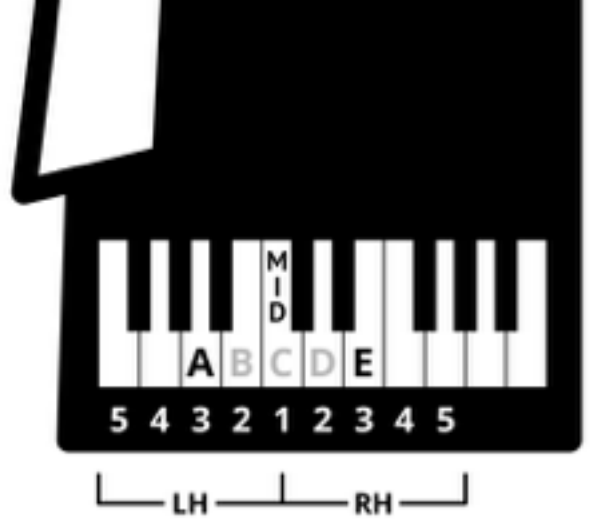


Sample



MAKING MY MUSIC

AHOY, MATEY



1

Sample

Instructions: Use the note guides found in the middle of the grand staff to help you complete this piano piece. When printing a note on the staff above or below each note guide, make sure your note value (quarter, half, or whole) matches the value of the note guide. When you have built this piece, perform it on the piano.

5

A A A B C C E C



NOTE HUNTER

Each set is missing one note. Compare the note names to the note images. Find the missing note and then print it on the empty staff.

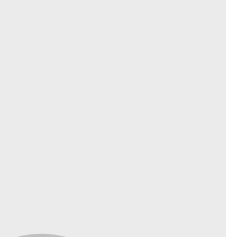
A B C	
D E A	
E B	
E B	
E B	
E B A	

Sample

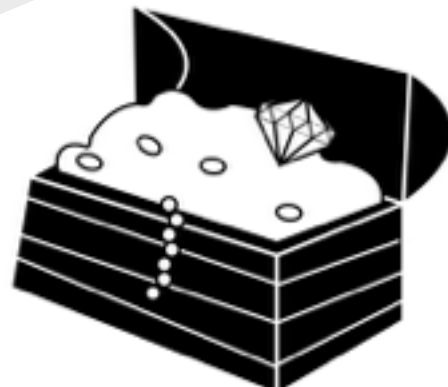


COMPLETE THE PATTERN

Print notes in the boxes to complete the pattern and help the pirate reach the treasure.



Sample





UNIT 3

In each box, draw a note that matches the first note.



A

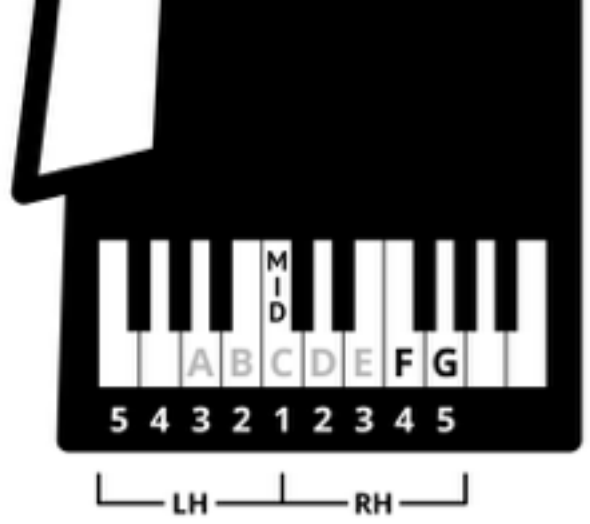
E

Sample



MAKING MY MUSIC

CROWN AROUND



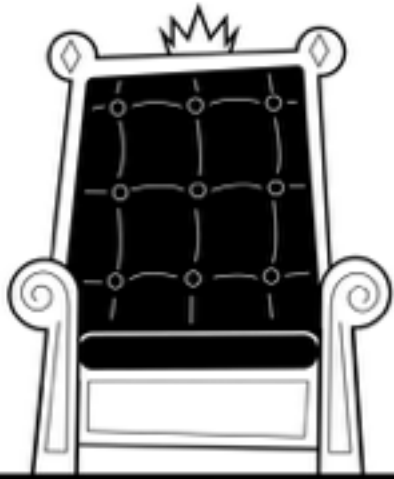
5

Sample

Instructions: Use the note guides found in the middle of the grand staff to help you complete this piano piece. When printing a note on the staff above or below each note guide, make sure your note value (quarter, half, or whole) matches the value of the note guide. When you have built this piece, perform it on the piano.

5

The musical notation is presented on a grand staff with two systems. The first system shows a treble clef staff with four quarter notes: G, F, E, and D. The second system shows a treble clef staff with three quarter notes: C, B, and C. The bass clef staff is empty in both systems. A large, light gray watermark reading "Sample" is overlaid diagonally across the entire page.



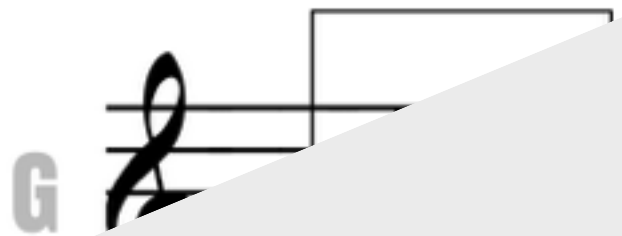
Starting at the letter A in the top row, follow the arrows until you reach the letter A again. Using half notes, print the note A on each staff on the path. Repeat with G and F.

A			G		F



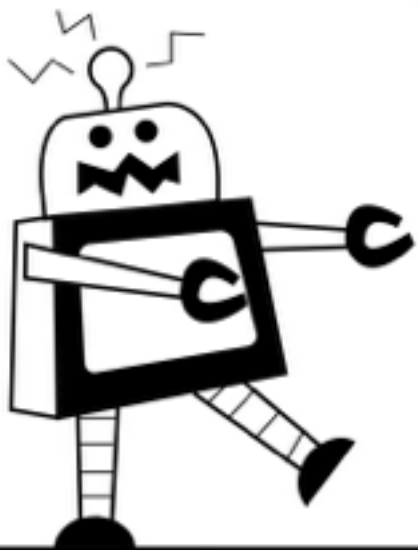
UNIT 4

In each box, draw a note that matches the first note.



Sample





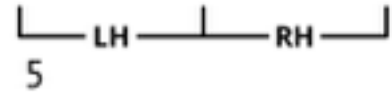
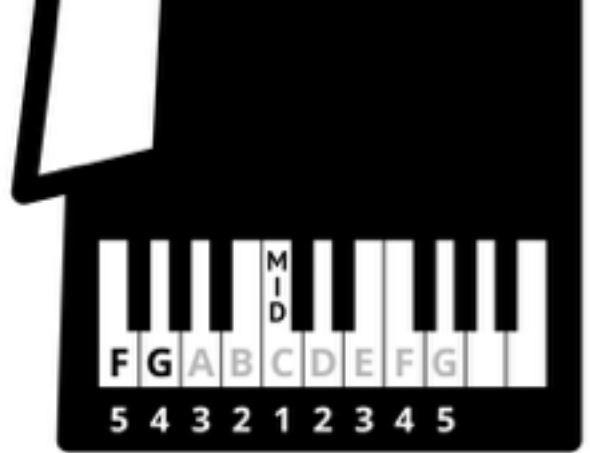
COMPLETE THE PATTERN

Print notes in the boxes to complete the pattern and help the robot reach its plug.

Sample



MAKING MY MUSIC
MUSIC MACHINE

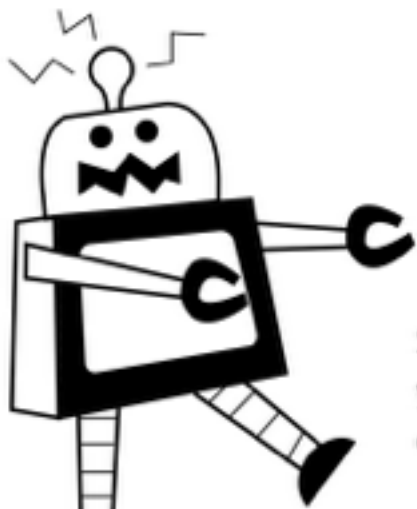


Sample

Instructions: Use the note guides found in the middle of the grand staff to help you complete this piano piece. When printing a note on the staff above or below each note guide, make sure your note value (quarter, half, or whole) matches the value of the note guide. When you have built this piece, perform it on the piano.

5

Sample



Starting at the letter G in the top row, follow the arrows until you reach the letter G again. Using half notes, print the note G on each staff on the path. Repeat with Treble F and Bass F.

Sample

G			F		F
	G				
			F		



AN INTRO

UNIT 5

In each box, draw a note that matches the first note.



BASS **C**

Two musical staves in bass clef with a common time signature 'C'. The first staff has a single quarter note on the second line. The second staff has a single quarter note on the second space. Below each staff is a rectangular box for drawing a note.

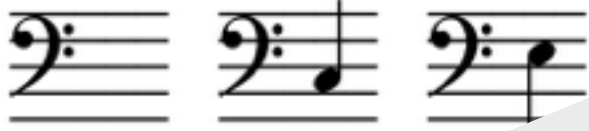

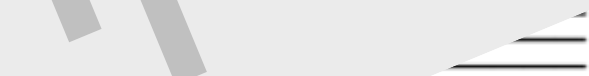

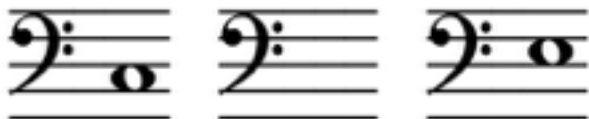

Sample

Two musical staves in bass clef with a common time signature 'C'. The first staff has a single quarter note on the second space. The second staff has a single quarter note on the second line. Below each staff is a rectangular box for drawing a note.



BUG HUNT

Each set is missing one note. Compare the note names to the note images. Find the missing note and then print it on the empty staff.

BASS C E D	
F BASS C G	
D F	
C D E	
C D E	
C D E	



MAKING MY MUSIC
DIG THIS BEAT



Musical notation for 'Dig This Beat' in 4/4 time. The first system shows a treble clef and a bass clef. The bass clef has notes C, C, G, G in the first measure and E, F in the second measure. The second system shows a bass clef with notes F, E, D in the second measure. A large 'Sample' watermark is overlaid diagonally across the page.

Instructions: Use the note guides found in the middle of the grand staff to help you complete this piano piece. When printing a note on the staff above or below each note guide, make sure your note value (quarter, half, or whole) matches the value of the note guide. When you have built this piece, perform it on the piano.

The image shows a grand staff with two systems of music. The first system consists of two measures. The first measure is marked with a '5' above the treble clef and a '1' above the bass clef. It contains four quarter notes on the treble staff, each with an upward-pointing arrow and the letter 'G' below it. The second measure contains two quarter notes on the treble staff, also with upward-pointing arrows. The second system also consists of two measures. The first measure contains two quarter notes on the bass staff, each with an upward-pointing arrow and the letter 'E' below it. The second measure contains three quarter notes on the bass staff, each with an upward-pointing arrow and the letters 'D', 'D', and 'C' below them. A large, light gray diagonal watermark reading 'Sample' is overlaid across the entire page.



Bug Words

Using whole notes, print Bass Cs, Ds, Es, or Gs
in the boxes to spell the bug words.

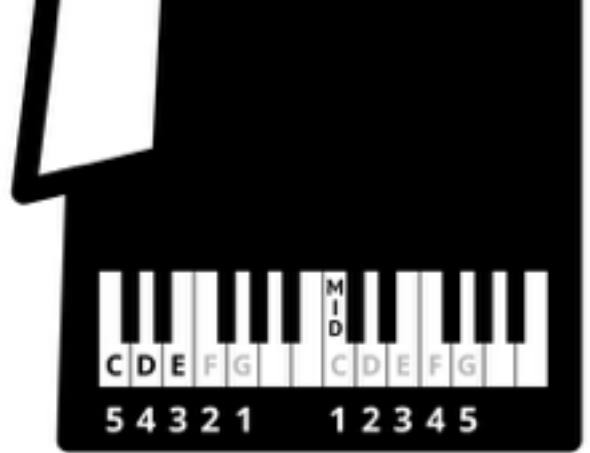
Ask an adult for help.

B	E		T	L	E
B	U				
G	A				N
	N	S	E		T



MAKING MY MUSIC

THE RAKE SHAKE



LH RH
1

Musical score for 'The Rake Shake' in 4/4 time. The score is written for a grand staff (treble and bass clefs). The first measure shows a bass line with notes C, E, G, G, each with a downward arrow indicating finger placement. The second measure shows two upward arrows. The third measure shows a bass line with notes F and G, each with a downward arrow. The fourth measure shows a treble line with an upward arrow and a circled E note below it.

Sample

Instructions: Use the note guides found in the middle of the grand staff to help you complete this piano piece. When printing a note on the staff above or below each note guide, make sure your note value (quarter, half, or whole) matches the value of the note guide. When you have built this piece, perform it on the piano.

5

The image shows a musical score for a piano piece, consisting of a grand staff with two staves: a treble clef staff and a bass clef staff. The piece is divided into four measures. The first measure contains four quarter notes in the bass clef, labeled C, E, G, and G. The second measure contains two quarter notes in the bass clef, labeled F and D. The third measure contains two quarter notes in the bass clef, labeled D and C. The fourth measure contains a whole note in the bass clef, labeled C. A large diagonal watermark reading "Sample" is overlaid across the entire page.

Thank you for previewing
**Andrea And Trevor Dow's
Playing With Note Printing
Activity Book For Piano, Book 1.**

[Click here to purchase this book.](#)